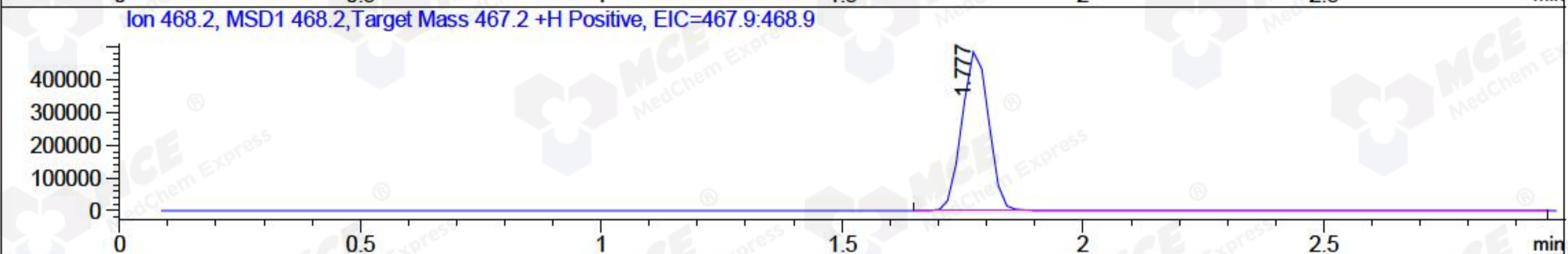
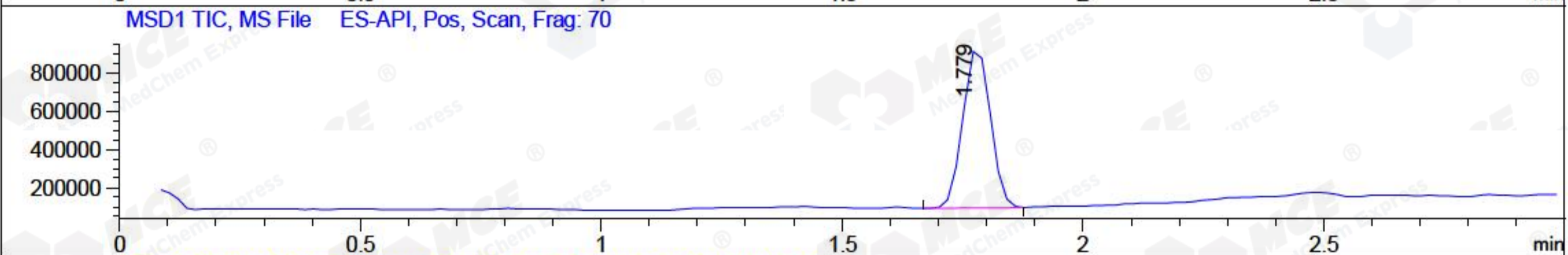
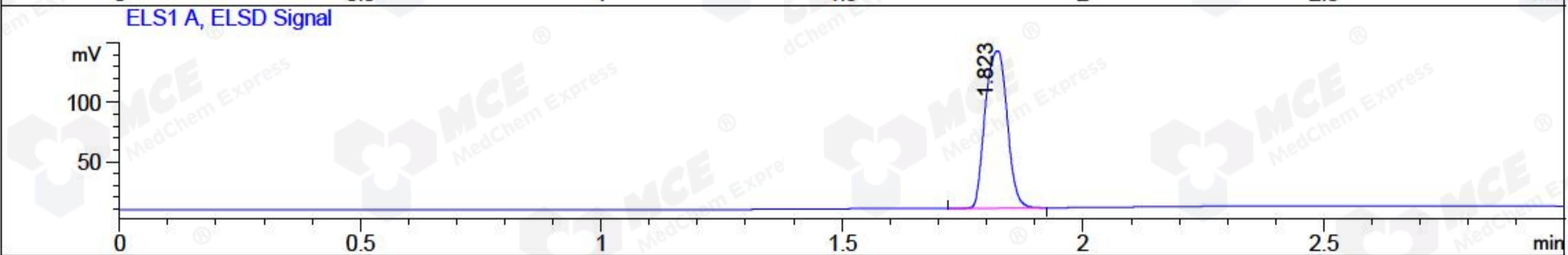
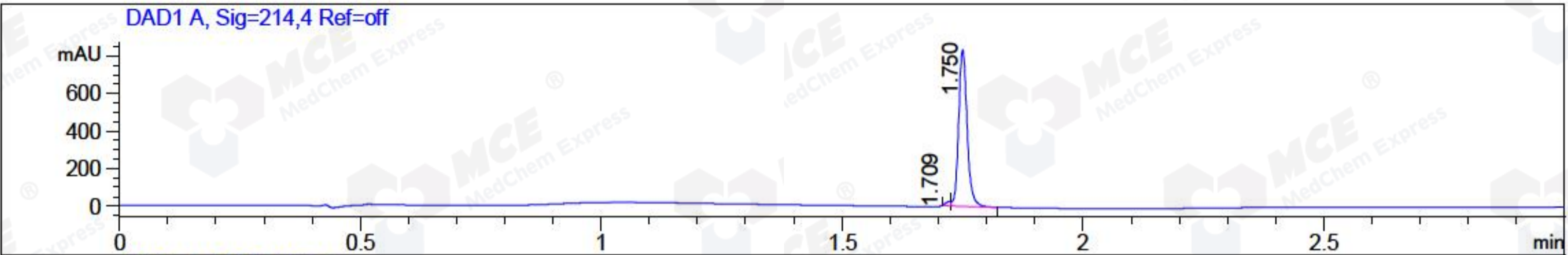


File ..a\2018\20180725\20180725\BIZ2018-725-CXL2.D Tgt Mass (CHM):
 Injection Date : 25 Jul 18 9:31 pm +0800 Seq. Line : 125
 Sample Name : BIZ2018-725-CXL2 Location : P1-F-04
 Acq. Operator : SYSTEM Inj : 1
 Spec. Reported : MS Integration Inj Volume : 1 ul
 Acq. Method : D:\LCMS03\Data\2018\20180725\20180725\1-POS-3MIN.M
 Analysis Method : D:\LCMS03\Data\2018\20180725\20180725\1-POS-3MIN.M
 Catalog No : HY-108339 Batch#31763
 Method Info : Mobile Phase: A: water(0.01%TFA) B:ACN(0.01%TFA)
 Gradient: 5% to 95%B within 1.3 min
 Flow Rate : 1.8ml/min
 Column :SunFire C18, 4.6*50mm,3.5um A-RP-186
 Oven Temperature : 45C



Integration Results for DAD1 A, Sig=214,4 Ref=off

RetTim	Width	Area	Height	Area%	MS (+)
1.71	0.01	17.76	1.00	1.71	468
1.75	0.02	1020.06	836.74	98.29	468

Integration Results for ELS1 A, ELSD Signal

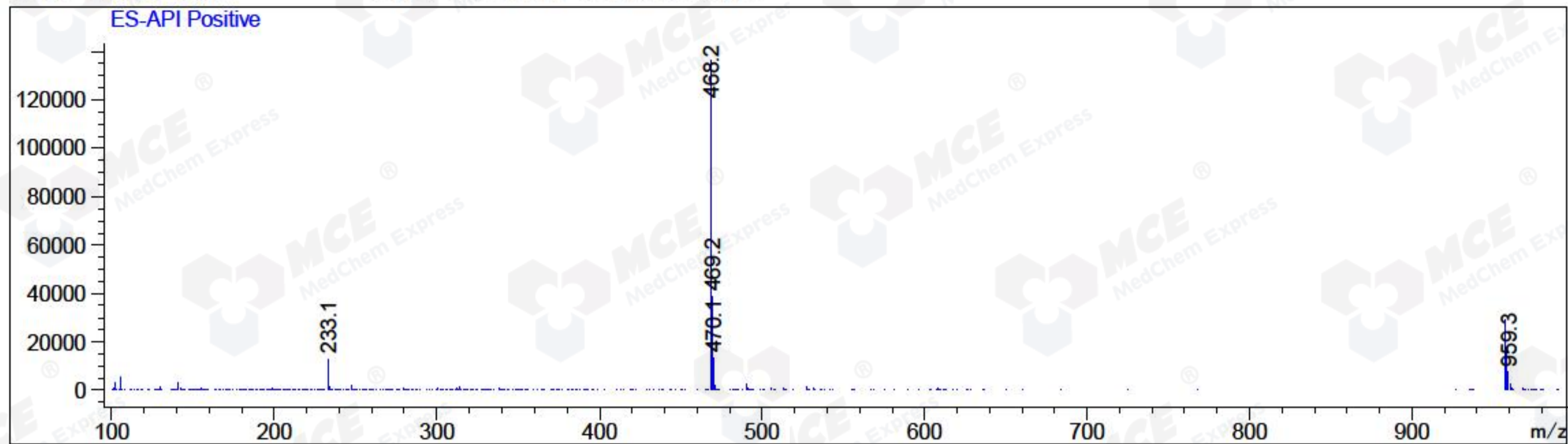
RetTim	Width	Area	Height	Area%	MS (+)
1.82	0.05	420.54	132.70	100.00	468

Integration Results for MSD1 TIC, MS File

RetTim	Width	Area	Height	Area%	MS (+)
1.78	0.07	3307088.25	842199.06	100.00	468

Ret. Time: 1.78

<<<< POSITIVE SPECTRA >>>>



*** End of Report ***