

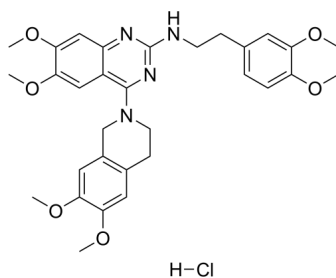
## CP-100356 (hydrochloride)

Cat. No.: HY-108347  
Batch No.: 98859  
CAS No.: 142715-48-8  
Molecular Formula: C<sub>31</sub>H<sub>37</sub>ClN<sub>4</sub>O<sub>6</sub>

## ANALYTICAL DATA

Theoretical: C(61.43%)、H(6.32%)、N(9.24%)  
Result: C(61.28%)、H(6.21%)、N(9.17%)

Chemical Structure:



Caution: Product has not been fully validated for medical applications. For research use only.

Tel: 609-228-6898

Fax: 609-228-5909

E-mail: tech@MedChemExpress.com

Address: 1 Deer Park Dr, Suite Q, Monmouth Junction, NJ 08852, USA