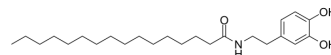


## N-Palmitoyl dopamine

Cat. No.:	HY-108455
CAS No.:	136181-87-8
Molecular Formula:	C <sub>24</sub> H <sub>41</sub> NO <sub>3</sub>
Molecular Weight:	391.59
Target:	Others
Pathway:	Others
Storage:	Please store the product under the recommended conditions in the Certificate of Analysis.



### BIOLOGICAL ACTIVITY

Description	N-Palmitoyl dopamine (PALDA) is an endogenous, long-chain, linear fatty acid dopamide, which is inactive on TRPV1. N-Palmitoyl dopamine displays 'entourage' effects on endovanilloids N-arachidonoyl-dopamine (NADA) and anandamide <sup>[1]</sup> .
In Vitro	PALDA (0.1-10 μM), the EC <sub>50</sub> of N-arachidonoyl-dopamine (NADA) is lowered from approximately 90 to approximately 30 nM. The effect on intracellular Ca <sup>2+</sup> by another endovanilloid, N-arachidonoyl-ethanolamine (anandamide, 50 nM), is also enhanced dose-dependently by PALDA. PALDA also acted in synergy with low pH (6.0-6.7) to enhance intracellular Ca <sup>2+</sup> via TRPV1 <sup>[1]</sup> . MCE has not independently confirmed the accuracy of these methods. They are for reference only.

### REFERENCES

[1]. Luciano De Petrocellis, et al. Actions of two naturally occurring saturated N-acyldopamines on transient receptor potential vanilloid 1 (TRPV1) channels. Br J Pharmacol. 2004 Sep;143(2):251-6.

**Caution: Product has not been fully validated for medical applications. For research use only.**

Tel: 609-228-6898

Fax: 609-228-5909

E-mail: tech@MedChemExpress.com

Address: 1 Deer Park Dr, Suite Q, Monmouth Junction, NJ 08852, USA