

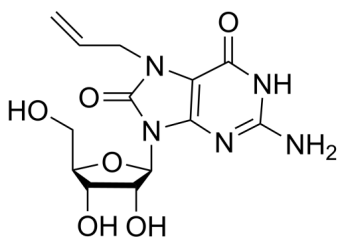
Loxoribine

Cat. No.: HY-108472
Batch No.: 58189
CAS No.: 121288-39-9
Molecular Formula: C₁₃H₁₇N₅O₆

ANALYTICAL DATA

Theoretical: C(43.20%-48.80%), H(-), N(19.40%-21.90%)
Result: C(44.50%), H(-), N(20.50%)

Chemical Structure:



Caution: Product has not been fully validated for medical applications. For research use only.

Tel: 609-228-6898

Fax: 609-228-5909

E-mail: tech@MedChemExpress.com

Address: 1 Deer Park Dr, Suite Q, Monmouth Junction, NJ 08852, USA