

File ..\DATA\2019\20190313\556\BIZ2019-312-WYQ12.D Tgt Mass (CHM):

Injection Date : 13 Mar 19 11:40 am +0800 Seq. Line : 31

Sample Name : BIZ2019-312-WYQ12 Location : P1-A-02

Acq. Operator : LQ_1052 Inj : 1

Spec. Reported : MS Integration Inj Volume : 1 ul

Acq. Method : D:\Chem32\1\data\2019\20190313\556\1-POS-3MIN-1.M

Analysis Method : D:\CHEM32\1\DATA\2019\20190313\556\1-POS-3MIN-1.M

Catalog No : HY-108474 Batch#38920

Method Info : Mobile Phase: A: water(0.01%TFA) B:ACN(0.01%TFA)

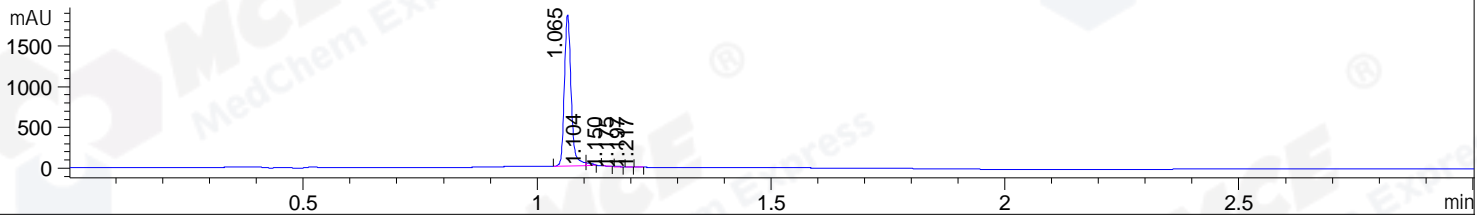
Gradient: 5% to 95%B within 1.3 min

Flow Rate :1.8ml/min

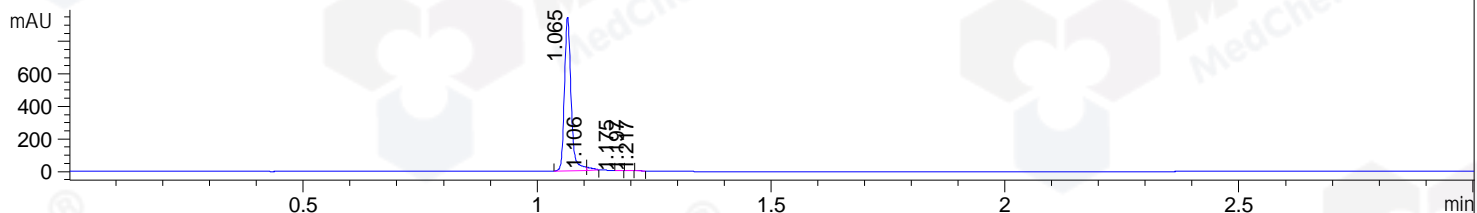
Column :SunFire C18, 4.6*50mm,3.5um A-RP-314

Oven Temperature : 45

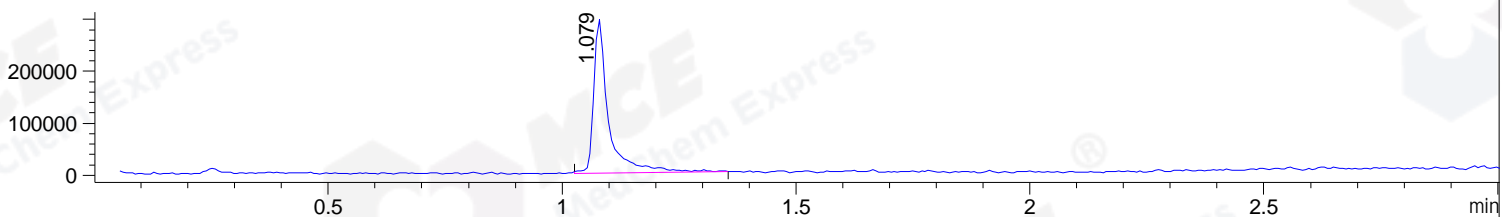
DAD1 B, Sig=214,4 Ref=off



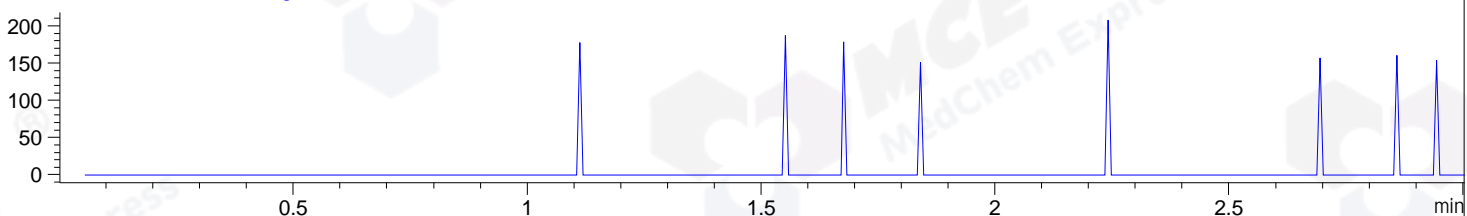
DAD1 C, Sig=254,4 Ref=off



MSD1 TIC, MS File ES-API, Pos, Scan, Frag: 70



Ion 357, MSD1 357, Target Mass 356 +H Positive, EIC=356.7:357.7



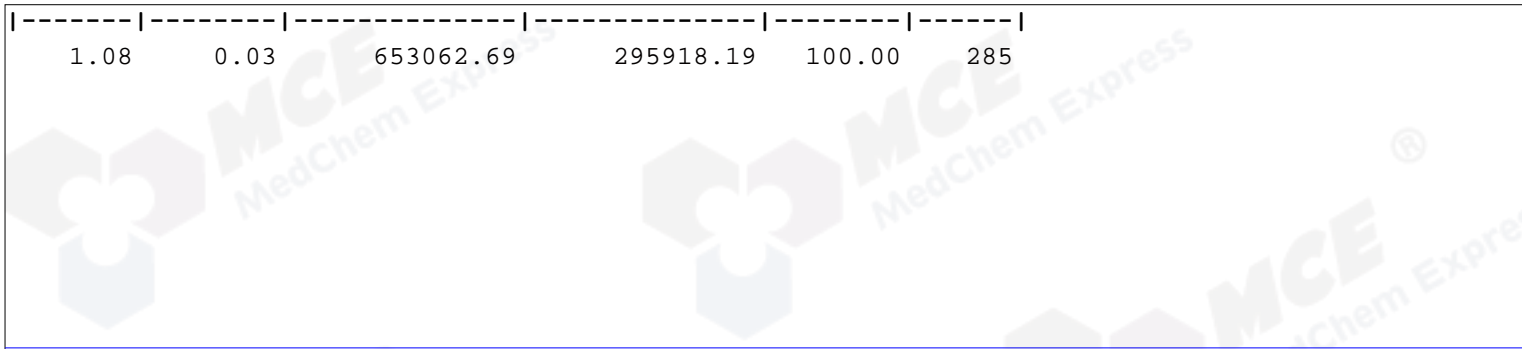
Integration Results for DAD1 B, Sig=214,4 Ref=off

RetTim	Width	Area	Height	Area%	MS (+)
1.07	0.02	1862.55	1859.24	98.21	285
1.10	0.01	26.92	34.45	1.42	285
1.15	0.02	2.43	2.30	0.13	285
1.17	0.01	1.58	2.46	0.08	285
1.20	0.01	1.41	2.07	0.07	285
1.22	0.01	1.66	1.98	0.09	285

Integration Results for DAD1 C, Sig=254,4 Ref=off

RetTim	Width	Area	Height	Area%	MS (+)
1.07	0.02	930.26	945.63	98.01	285
1.11	0.01	15.15	18.79	1.60	285
1.17	0.01	1.24	1.89	0.13	285
1.20	0.01	1.36	2.02	0.14	285
1.22	0.01	1.10	1.46	0.12	285

Integration Results for MSD1 TIC, MS File



RetTim	Width	Area	Height	Area%	MS (+)
--------	-------	------	--------	-------	--------

Ret. Time: 1.08

<<<< POSITIVE SPECTRA >>>>

ES-API Positive

