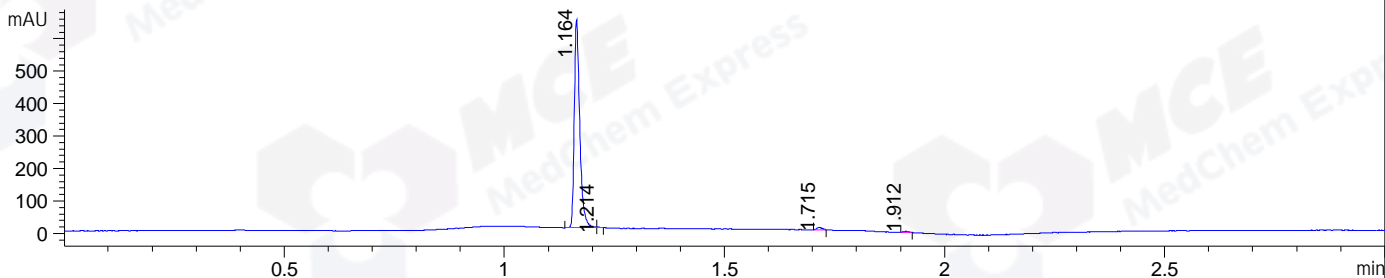
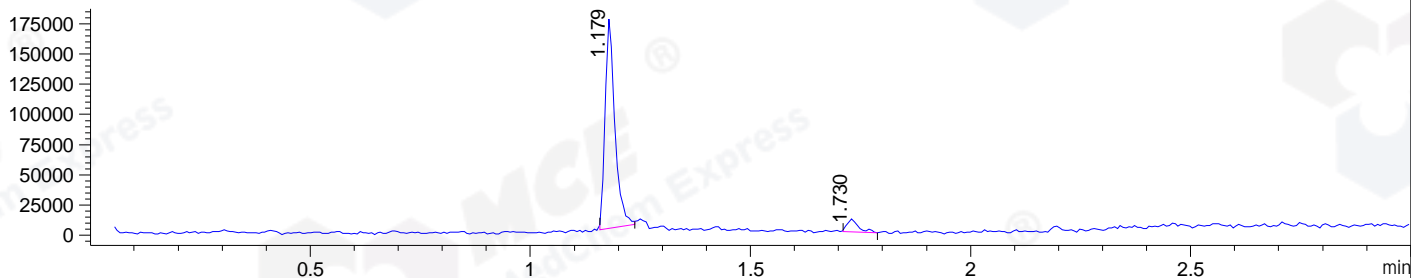


File ..\DATA\2020\20200616\997\BIZ2020-615-WMX1.D Tgt Mass (CHM):  
 Injection Date : 16 Jun 20 11:21 am +0800 Seq. Line : 29  
 Sample Name : BIZ2020-615-WMX1 Location : P1-A-04  
 Acq. Operator : ZJ\_1432 Inj : 1  
 Spec. Reported : MS Integration Inj Volume : 0.5 ul  
 Acq. Method : D:\Chem32\1\data\2020\20200616\997\1-POS-3MIN.M  
 Analysis Method : D:\CHEM32\1\DATA\2020\20200616\997\1-POS-3MIN.M  
 Catalog No : HY-10847B  
 Method Info : Mobile Phase: A: water(0.01%TFA) B:ACN(0.01%TFA)  
 Gradient: 5% to 95%B within 1.3 min  
 Flow Rate :1.8ml/min  
 Column :SunFire C18, 4.6\*50mm,3.5um A-RP-607  
 Oven Temperature : 45

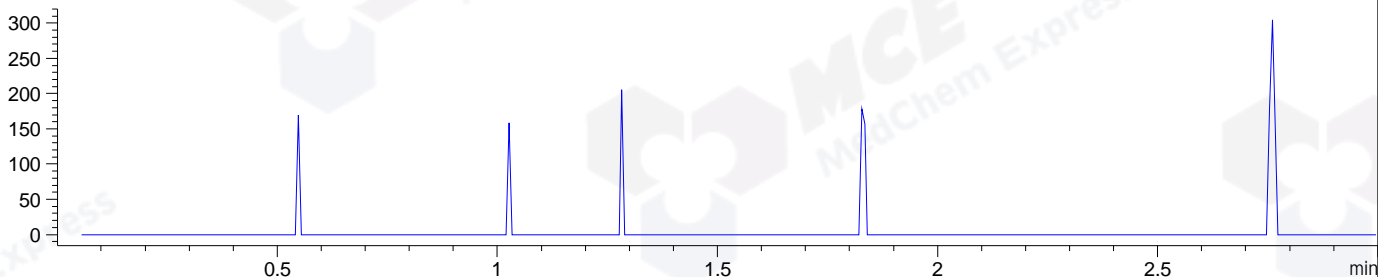
DAD1 B, Sig=214,4 Ref=off



MSD1 TIC, MS File ES-API, Pos, Scan, Frag: 70



Ion 511, MSD1 511, Target Mass 510 +H Positive, EIC=510.7:511.7



Integration Results for DAD1 B, Sig=214,4 Ref=off

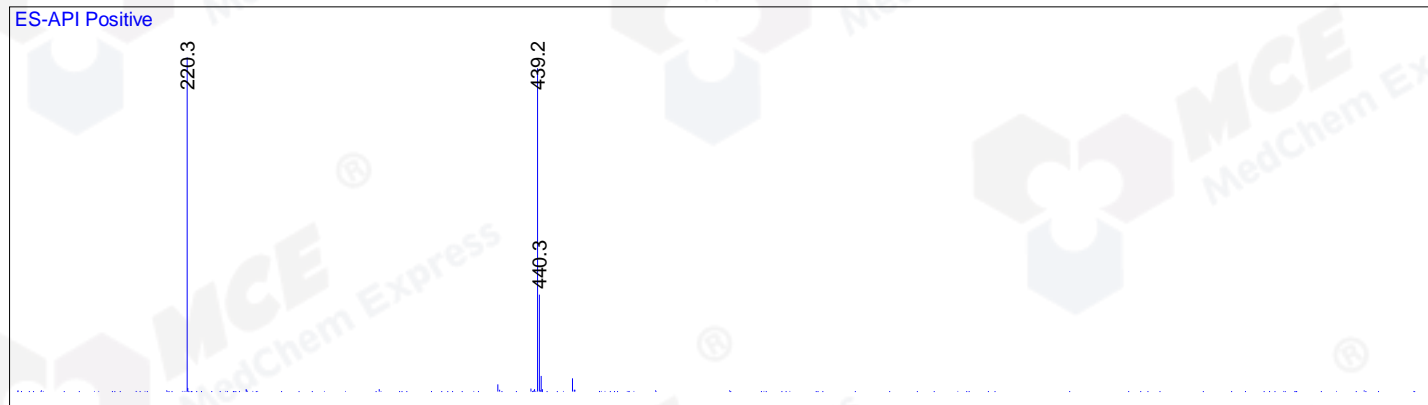
RetTim	Width	Area	Height	Area%	MS (+)
1.16	0.01	553.22	641.10	98.22	220
1.21	0.01	1.08	1.87	0.19	439
1.72	0.01	6.31	7.46	1.12	454
1.91	0.01	2.63	3.26	0.47	ND

Integration Results for MSD1 TIC, MS File

RetTim	Width	Area	Height	Area%	MS (+)
1.18	0.02	270919.69	174669.69	93.65	220
1.73	0.03	18357.81	10609.15	6.35	454

Ret. Time: 1.18

<<<< POSITIVE SPECTRA >>>>



Ret. Time: 1.73

