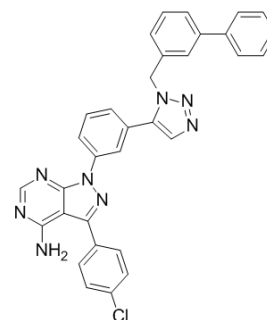


KB SRC 4

Cat. No.:	HY-108488
CAS No.:	1380088-03-8
Molecular Formula:	C ₃₂ H ₂₃ ClN ₈
Molecular Weight:	555.03
Target:	Src
Pathway:	Protein Tyrosine Kinase/RTK
Storage:	Please store the product under the recommended conditions in the COA.



BIOLOGICAL ACTIVITY

Description	KB SRC 4 is a potent, and highly selective c-Src inhibitor, with a K _i of 44 nM and a K _d of 86 nM, and shows no inhibition on c-Abl up to 125 μM; KB SRC 4 has antitumor activity.
IC₅₀ & Target	Ki: 44 nM (c-Src) ^[1] Kd: 86 nM (c-Src) ^[1]
In Vitro	KB SRC 4 (Compound 4) is a potent, highly selective c-Src inhibitor, with a K _i of 44 nM and a K _d of 86 nM, and shows no inhibition on c-Abl up to 125 μM. KB SRC 4 is selective between Src family members, with >2-fold selectivity over both Lck (K _d , 160 nM) and Fgr (K _d , 240 nM), 8-fold selectivity over c-Yes (K _d , 720 nM), and >40-fold selectivity over Lyn (K _d , 3200 nM), Hck (K _d , 4400 nM), and Fyn (K _d , >40000 nM). KB SRC 4 inhibits the growth of cancer cell lines, with GI ₅₀ s of 11 μM, 12 μM, 11 μM, 6.0 μM against HT-29, SK-BR-3, MCF7, MDA-MB-453, and NIH-3T3, respectively ^[1] .

REFERENCES

[1]. Brandvold KR, et al. Development of a highly selective c-Src kinase inhibitor. ACS Chem Biol. 2012 Aug 17;7(8):1393-8.

Caution: Product has not been fully validated for medical applications. For research use only.

Tel: 609-228-6898

Fax: 609-228-5909

E-mail: tech@MedChemExpress.com

Address: 1 Deer Park Dr, Suite Q, Monmouth Junction, NJ 08852, USA