

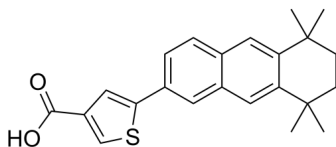
CD2314

Cat. No.: HY-108533
Batch No.: 274743
CAS No.: 170355-37-0
Molecular Formula: C₂₃H₂₄O₂S

ANALYTICAL DATA

Theoretical: C(75.79%), H(6.64%), N(-)
Result: C(75.42%), H(6.66%), N(-)

Chemical Structure:



Caution: Product has not been fully validated for medical applications. For research use only.

Tel: 609-228-6898

Fax: 609-228-5909

E-mail: tech@MedChemExpress.com

Address: 1 Deer Park Dr, Suite Q, Monmouth Junction, NJ 08852, USA