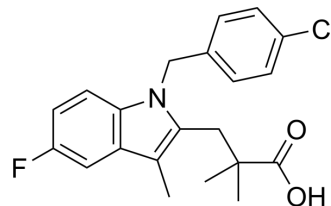


L 655240

Cat. No.:	HY-108564
CAS No.:	103253-15-2
Molecular Formula:	C ₂₁ H ₂₁ ClFNO ₂
Molecular Weight:	373.85
Target:	Prostaglandin Receptor
Pathway:	GPCR/G Protein
Storage:	Please store the product under the recommended conditions in the Certificate of Analysis.



BIOLOGICAL ACTIVITY

Description	L 655240 is thromboxane antagonist. L 655240 attenuates early ischemia- and reperfusion-induced arrhythmias in a canine model of coronary artery occlusion. L 655240 also involves in cancer and autoimmune disorders ^[1] .
In Vitro	L 655240 (7 nM) inhibits endoperoxide-induced aggregation in human platelets ^[1] . MCE has not independently confirmed the accuracy of these methods. They are for reference only.
In Vivo	L 655240 (0.3 mg/kg; i.v.; single dose) changes heart rate, arterial and pulmonary arterial blood pressure, and cardiac output in canine model ^[1] . MCE has not independently confirmed the accuracy of these methods. They are for reference only.

REFERENCES

[1]. Wainwright CL, et al. The effects of L655,240, a selective thromboxane and prostaglandin endoperoxide antagonist, on ischemia- and reperfusion-induced cardiac arrhythmias. *J Cardiovasc Pharmacol.* 1988 Sep;12(3):264-71.

Caution: Product has not been fully validated for medical applications. For research use only.

Tel: 609-228-6898

Fax: 609-228-5909

E-mail: tech@MedChemExpress.com

Address: 1 Deer Park Dr, Suite Q, Monmouth Junction, NJ 08852, USA