

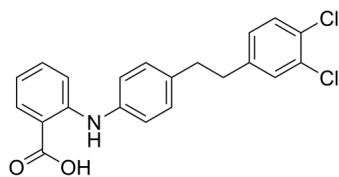
PD-118057

Cat. No.: HY-108594
Batch No.: 100631
CAS No.: 313674-97-4
Molecular Formula: C₂₁H₁₇Cl₂NO₂

ANALYTICAL DATA

Theoretical: C(65.30%), H(4.44%), N(3.63%)
Result: C(64.98%), H(4.63%), N(3.39%)

Chemical Structure:



Caution: Product has not been fully validated for medical applications. For research use only.

Tel: 609-228-6898

Fax: 609-228-5909

E-mail: tech@MedChemExpress.com

Address: 1 Deer Park Dr, Suite Q, Monmouth Junction, NJ 08852, USA