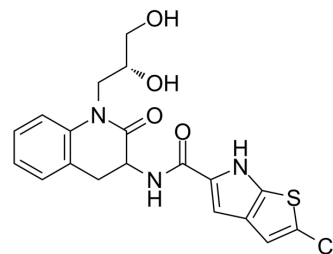


GPI688

Cat. No.:	HY-108614
CAS No.:	918902-32-6
Molecular Formula:	C ₁₉ H ₁₈ ClN ₃ O ₄ S
Molecular Weight:	419.88
Target:	Others
Pathway:	Others
Storage:	Please store the product under the recommended conditions in the Certificate of Analysis.



BIOLOGICAL ACTIVITY

Description GPI688 is a potent and orally active glycogen phosphorylase (GPa) inhibitor with IC₅₀s of 19 nM, 61 nM and 12 nM for human liver GPa, rat liver GPa and human skeletal muscle GPa, respectively^[1]. GPI688 can inhibit glucagons-mediated glucose output in rat primary hepatocytes. GPI688 can be used for researching glucagon-mediated hyperglycaemia^[2].

IC₅₀ & Target IC₅₀: 19 nM (human liver GPa), 61 nM (rat liver GPa), 12 nM (human skeletal muscle GPa)^[1]

REFERENCES

[1]. Freeman S, et al. Sensitivity of glycogen phosphorylase isoforms to indole site inhibitors is markedly dependent on the activation state of the enzyme. *Br J Pharmacol.* 2006;149(6):775-785.

[2]. Poucher SM, et al. An assessment of the in vivo efficacy of the glycogen phosphorylase inhibitor GPI688 in rat models of hyperglycaemia. *Br J Pharmacol.* 2007;152(8):1239-1247.

Caution: Product has not been fully validated for medical applications. For research use only.

Tel: 609-228-6898

Fax: 609-228-5909

E-mail: tech@MedChemExpress.com

Address: 1 Deer Park Dr, Suite Q, Monmouth Junction, NJ 08852, USA