

HLI373 (dihydrochloride)

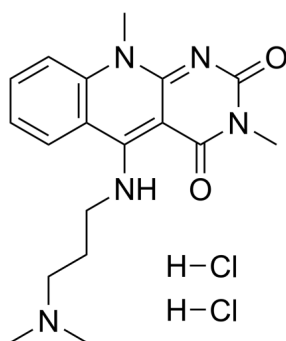
Cat. No.: HY-108640A
Batch No.: 279244
CAS No.: 1782531-99-0
Molecular Formula: C₁₈H₂₅Cl₂N₅O₂

ANALYTICAL DATA

Theoretical: C(49.49%), H(6.35%), N(16.03%)

Result: C(49.68%), H(6.12%), N(16.11%)

Chemical Structure:



Caution: Product has not been fully validated for medical applications. For research use only.

Tel: 609-228-6898

Fax: 609-228-5909

E-mail: tech@MedChemExpress.com

Address: 1 Deer Park Dr, Suite Q, Monmouth Junction, NJ 08852, USA