

## MRS2279 (diammonium)

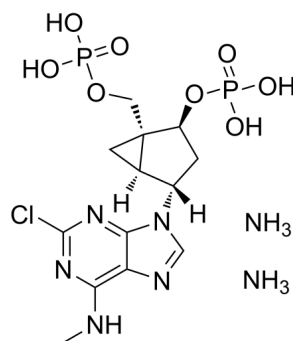
Cat. No.: HY-108657A  
Batch No.: 239915  
CAS No.: 2387505-47-5  
Molecular Formula: C<sub>13</sub>H<sub>24</sub>ClN<sub>7</sub>O<sub>8</sub>P<sub>2</sub>

### ANALYTICAL DATA

Theoretical: C(28.93%)、H(5.23%)、N(18.16%)

Result: C(28.29%)、H(5.11%)、N(18.53%)

Chemical Structure:



**Caution: Product has not been fully validated for medical applications. For research use only.**

Tel: 609-228-6898

Fax: 609-228-5909

E-mail: [tech@MedChemExpress.com](mailto:tech@MedChemExpress.com)

Address: 1 Deer Park Dr, Suite Q, Monmouth Junction, NJ 08852, USA