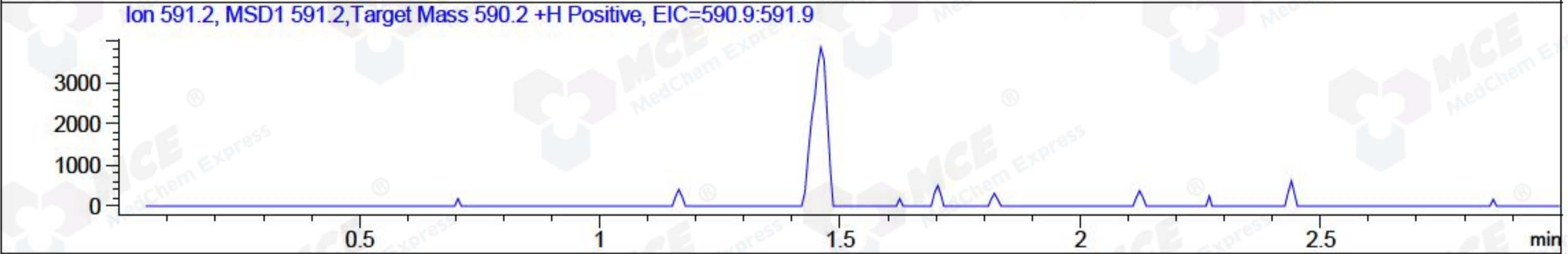
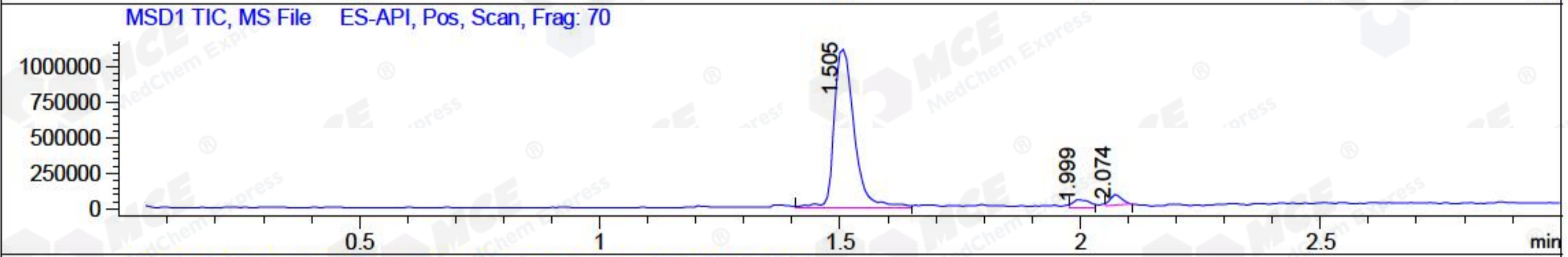
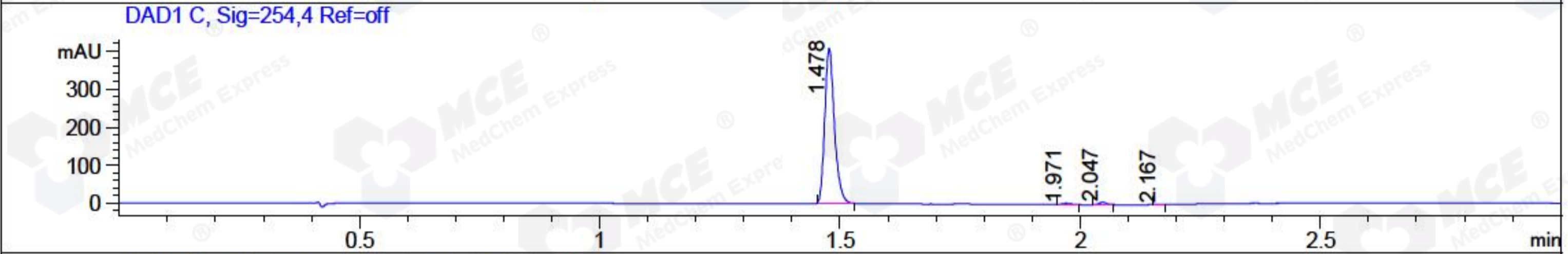
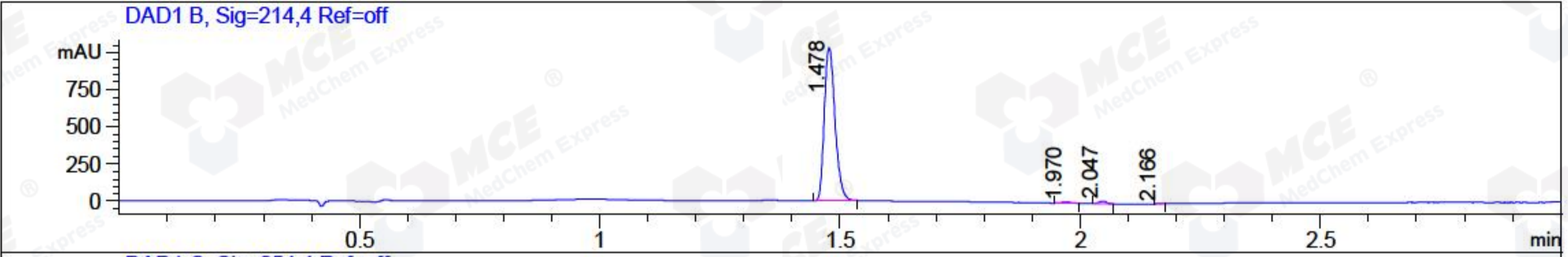


File ..1\DATA\2018\20181127\511\BIZ2018-N26-CXL5.D Tgt Mass (CHM):  
 Injection Date : 27 Nov 18 10:50 am +0800 Seq. Line : 5  
 Sample Name : BIZ2018-N26-CXL5 Location : P2-A-01  
 Acq. Operator : LQ\_1052 Inj : 1  
 Spec. Reported : MS Integration Inj Volume : 3 ul  
 Acq. Method : D:\Chem32\1\data\2018\20181127\511\1-POS-3MIN-1.M  
 Analysis Method : D:\CHEM32\1\DATA\2018\20181127\511\1-POS-3MIN-1.M  
 Catalog No : HY-108677 Batch#34776 A-RP-314  
 Method Info : Mobile Phase: A: water(0.01%TFA) B:ACN(0.01%TFA)  
 Gradient: 5% to 95%B within 1.3 min  
 Flow Rate : 1.8ml/min  
 Column :SunFire C18, 4.6\*50mm,3.5um A-RP-314  
 Oven Temperature : 45□



Integration Results for DAD1 B, Sig=214,4 Ref=off

RetTim	Width	Area	Height	Area%	MS (+)
1.48	0.02	1608.02	1031.08	98.00	278
1.97	0.02	12.92	9.70	0.79	420
2.05	0.02	18.36	17.21	1.12	464
2.17	0.01	1.46	1.71	0.09	158

Integration Results for DAD1 C, Sig=254,4 Ref=off

RetTim	Width	Area	Height	Area%	MS (+)
1.48	0.02	569.79	407.49	98.08	278
1.97	0.02	4.28	3.23	0.74	420
2.05	0.02	6.44	6.01	1.11	464
2.17	0.01	0.41	0.54	0.07	158

Integration Results for MSD1 TIC, MS File

RetTim	Width	Area	Height	Area%	MS (+)
1.51	0.05	3203392.75	1111958.00	93.00	278

2.00	0.04	126364.96	54114.99	3.67	420
2.07	0.03	114717.77	72842.23	3.33	464

Ret. Time: 1.51

&lt;&lt;&lt;&lt; POSITIVE SPECTRA &gt;&gt;&gt;&gt;

ES-API Positive

278.2

557.2

555.3

Ret. Time: 2.00

ES-API Positive

155.1

158.1

217.9

420.2

421.1

436.0

456.1

479.1

581.2

863.5

890.5

Ret. Time: 2.07

ES-API Positive

159.1

232.6

464.3

465.3

466.3

487.1

523.2

951.3

949.3