

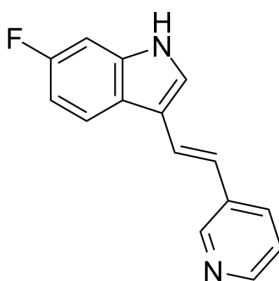
680C91

Cat. No.: HY-108681
CAS No.: 163239-22-3
Batch No.: 178391
Chemical Name: 1H-Indole, 6-fluoro-3-[(1E)-2-(3-pyridinyl)ethenyl]-

PHYSICAL AND CHEMICAL PROPERTIES

Molecular Formula: C₁₅H₁₁FN₂
Molecular Weight: 238.26
Storage: Powder -20°C 3 years
 4°C 2 years
 In solvent -80°C 6 months
 -20°C 1 month

Chemical Structure:



ANALYTICAL DATA

Appearance: White to light yellow (Solid)
¹H NMR Spectrum: Consistent with structure
LCMS: Consistent with structure
Purity (LCMS): 98.16%
Conclusion: The product has been tested and complies with the given specifications.

Caution: Product has not been fully validated for medical applications. For research use only.

Tel: 609-228-6898

Fax: 609-228-5909

E-mail: tech@MedChemExpress.com

Address: 1 Deer Park Dr, Suite Q, Monmouth Junction, NJ 08852, USA