

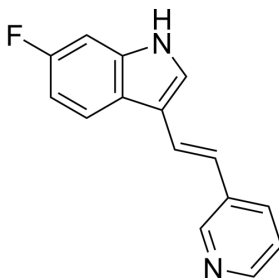
## 680C91

Cat. No.: HY-108681  
CAS No.: 163239-22-3  
Batch No.: 403608  
Chemical Name: 1H-Indole, 6-fluoro-3-[(1E)-2-(3-pyridinyl)ethenyl]-

### PHYSICAL AND CHEMICAL PROPERTIES

Molecular Formula: C<sub>15</sub>H<sub>11</sub>FN<sub>2</sub>  
Molecular Weight: 238.26  
Storage: Powder      -20°C    3 years  
                                  4°C      2 years  
                                  In solvent   -80°C    6 months  
  -20°C    1 month

Chemical Structure:



### ANALYTICAL DATA

Appearance: White to light yellow (Solid)  
<sup>1</sup>H NMR Spectrum: Consistent with structure  
LCMS: Consistent with structure  
Purity (LCMS): 99.54%  
Conclusion: The product has been tested and complies with the given specifications.

**Caution: Product has not been fully validated for medical applications. For research use only.**

Tel: 609-228-6898

Fax: 609-228-5909

E-mail: tech@MedChemExpress.com

Address: 1 Deer Park Dr, Suite Q, Monmouth Junction, NJ 08852, USA