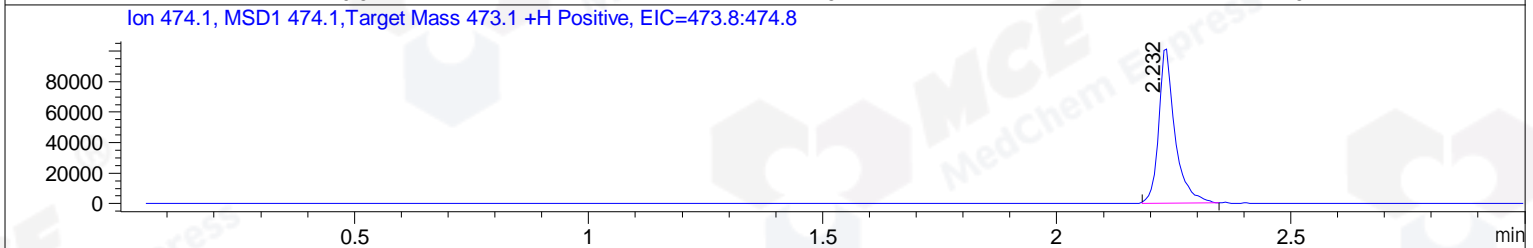
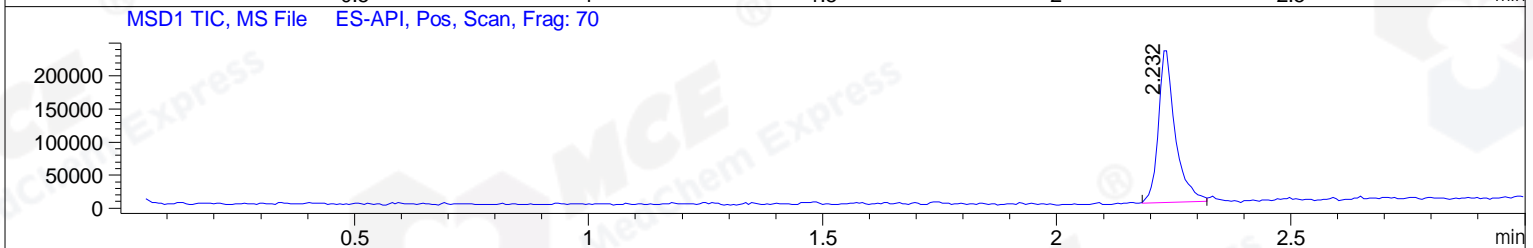
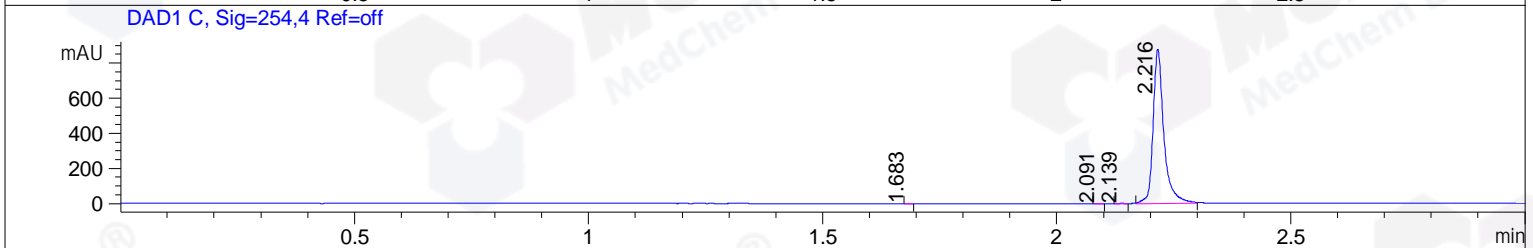
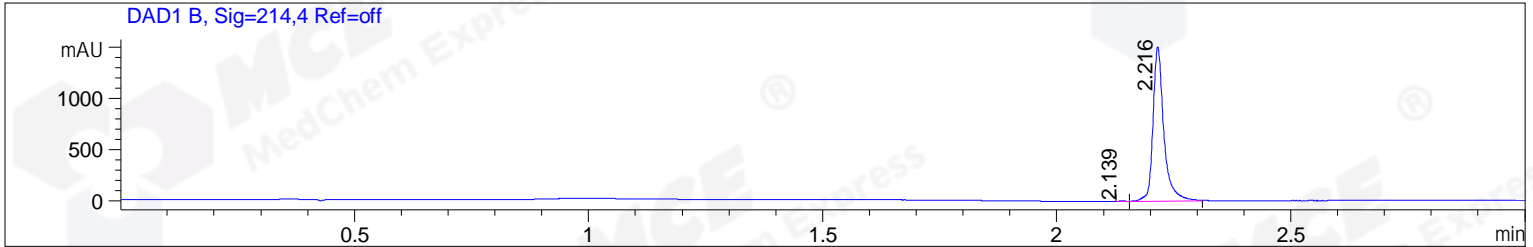


File ..1\DATA\2019\20190403\567\BIZ2019-402-CXL2.D Tgt Mass (CHM):
 Injection Date : 3 Apr 19 11:35 am +0800 Seq. Line : 10
 Sample Name : BIZ2019-402-CXL2 Location : P1-C-07
 Acq. Operator : LQ_1052 Inj : 1
 Spec. Reported : MS Integration Inj Volume : 1 ul
 Acq. Method : D:\Chem32\1\data\2019\20190403\567\1-POS-3MIN-1.M
 Analysis Method : D:\CHEM32\1\DATA\2019\20190403\567\1-POS-3MIN-1.M
 Catalog No : HY-108690 Batch#39735
 Method Info : Mobile Phase: A: water(0.01%TFA) B:ACN(0.01%TFA)
 Gradient: 5% to 95%B within 1.3 min
 Flow Rate :1.8ml/min
 Column :SunFire C18, 4.6*50mm,3.5um A-RP-314
 Oven Temperature : 45



Integration Results for DAD1 B, Sig=214,4 Ref=off

RetTim	Width	Area	Height	Area%	MS (+)
2.14	0.02	6.35	5.60	0.26	142
2.22	0.03	2448.85	1511.90	99.74	474

Integration Results for DAD1 C, Sig=254,4 Ref=off

RetTim	Width	Area	Height	Area%	MS (+)
1.68	0.01	0.25	0.30	0.02	ND
2.09	0.01	0.24	0.27	0.02	142
2.14	0.02	1.96	1.94	0.14	142
2.22	0.02	1399.45	878.49	99.83	474

Integration Results for MSD1 TIC, MS File

RetTim	Width	Area	Height	Area%	MS (+)
2.23	0.04	577855.56	236444.52	100.00	474

Ret. Time: 2.23

<<<< POSITIVE SPECTRA >>>>

ES-API Positive

