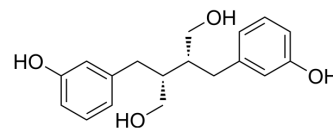


(±)-Enterodiol

Cat. No.:	HY-108695B
CAS No.:	77756-22-0
Molecular Formula:	C ₁₈ H ₂₂ O ₄
Molecular Weight:	302.36
Target:	Apoptosis; Endogenous Metabolite
Pathway:	Apoptosis; Metabolic Enzyme/Protease
Storage:	Please store the product under the recommended conditions in the Certificate of Analysis.



BIOLOGICAL ACTIVITY

Description

(±)-Enterodiol is the racemate of Enterodiol (HY-108695). Enterodiol is transformed by human intestinal bacteria from lignans contained in various whole-grain cereals, nuts, legumes, flaxseed, and vegetables. Enterodiol has an apoptotic effect in colorectal cancer (CRC) cells. Enterodiol has anti-cancer activities^{[1][2]}.

REFERENCES

- [1]. Shin MK, et al. Apoptotic effect of enterodiol, the final metabolite of edible lignans, in colorectal cancer cells. *J Sci Food Agric*. 2019 Mar 30;99(5):2411-2419.
- [2]. Liu H, et al. Enterolactone has stronger effects than enterodiol on ovarian cancer. *J Ovarian Res*. 2017 Jul 24;10(1):49.

Caution: Product has not been fully validated for medical applications. For research use only.

Tel: 609-228-6898

Fax: 609-228-5909

E-mail: tech@MedChemExpress.com

Address: 1 Deer Park Dr, Suite Q, Monmouth Junction, NJ 08852, USA