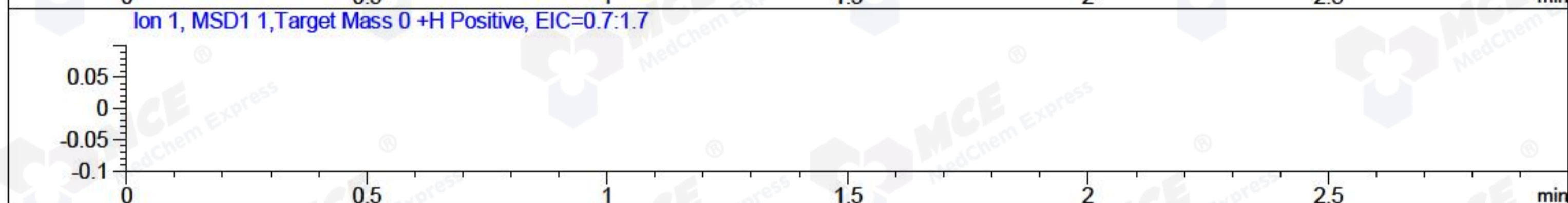
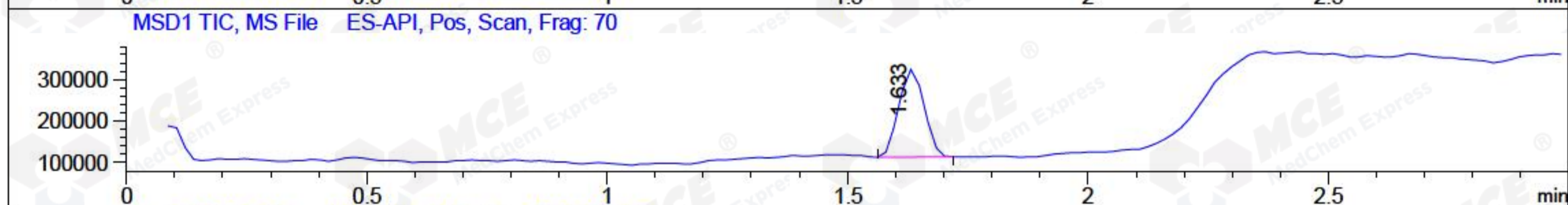
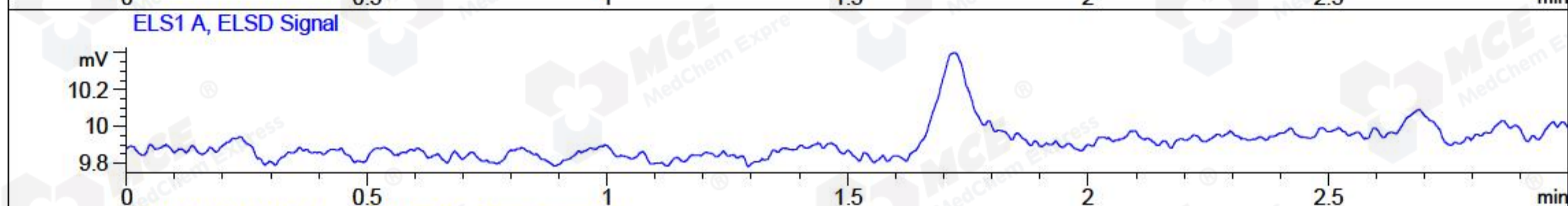
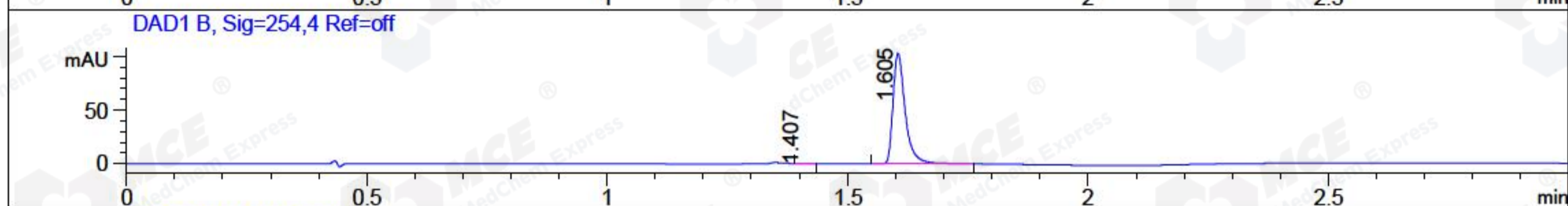
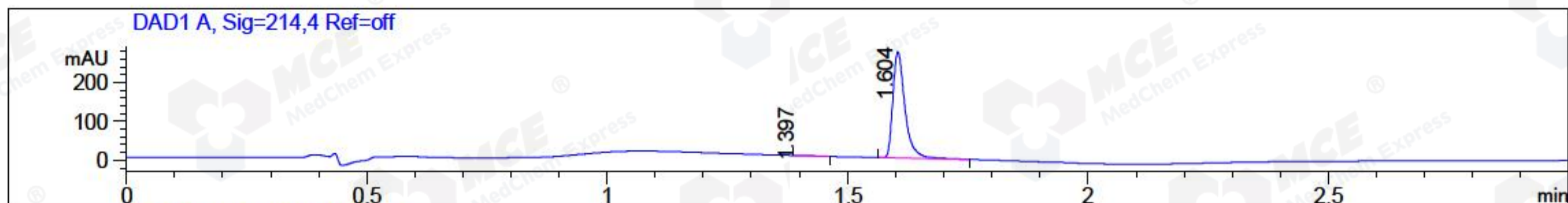


File ..Data\2018\20181119\20181119\FSD5927-006-2.D Tgt Mass (CHM):  
 Injection Date : 19 Nov 18 1:35 pm +0800 Seq. Line : 55  
 Sample Name : FSD5927-006-2 Location : P1-D-11  
 Acq. Operator : SYSTEM Inj : 1  
 Spec. Reported : MS Integration Inj Volume : 1 ul  
 Acq. Method : D:\LCMS03\Data\2018\20181119\20181119\1-POS-3MIN.M  
 Analysis Method : D:\LCMS03\Data\2018\20181119\20181119\1-POS-3MIN.M  
 Catalog No : HY-108715 Batch#34493  
 Method Info : Mobile Phase: A: water(0.01%TFA) B:ACN(0.01%TFA)  
 Gradient: 5% to 95%B within 1.3 min  
 Flow Rate :1.8ml/min  
 Column :SunFire C18, 4.6\*50mm,3.5um A-RP-186  
 Oven Temperature : 45C



Integration Results for DAD1 A, Sig=214,4 Ref=off

RetTim	Width	Area	Height	Area%	MS (+)
1.40	0.04	1.16	0.47	0.24	130
1.60	0.03	479.20	273.72	99.76	130

Integration Results for DAD1 B, Sig=254,4 Ref=off

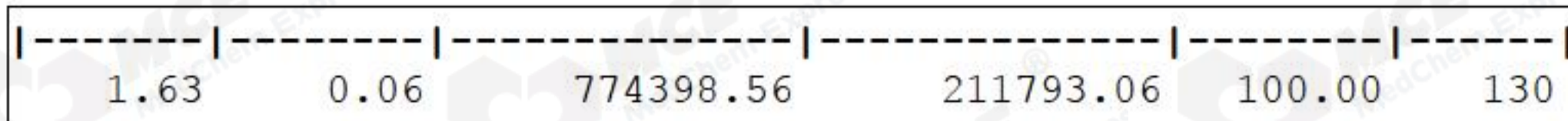
RetTim	Width	Area	Height	Area%	MS (+)
1.41	0.02	0.25	0.16	0.14	130
1.60	0.03	182.36	103.00	99.86	130

Integration Results for ELS1 A, ELSD Signal

RetTim	Width	Area	Height	Area%	MS (+)

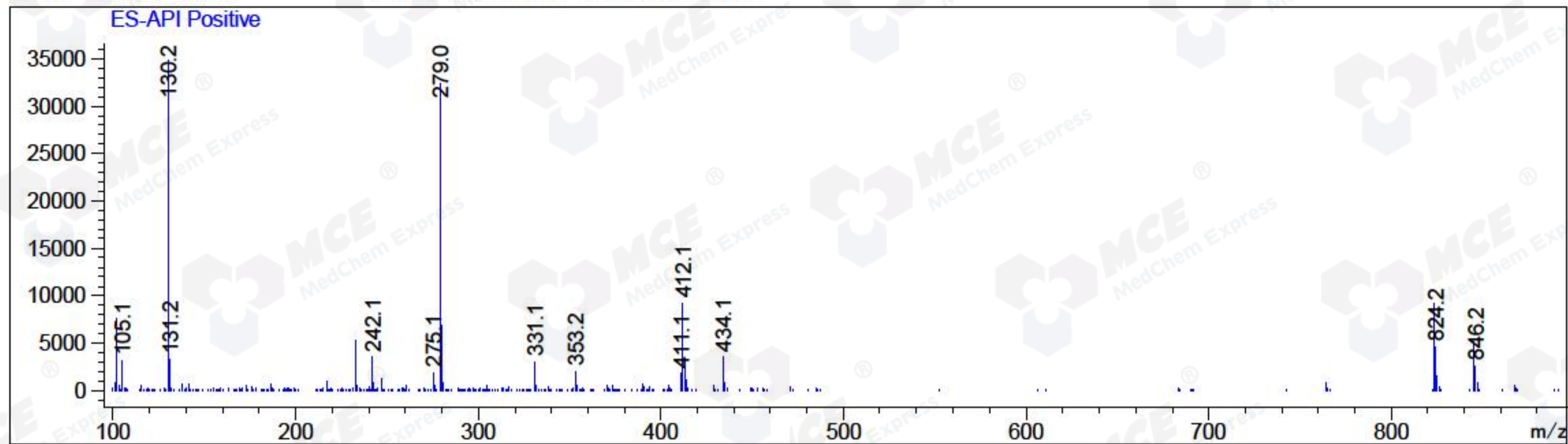
Integration Results for MSD1 TIC, MS File

RetTim	Width	Area	Height	Area%	MS (+)



Ret. Time: 1.63

<<<< POSITIVE SPECTRA >>>>



\*\*\* End of Report \*\*\*