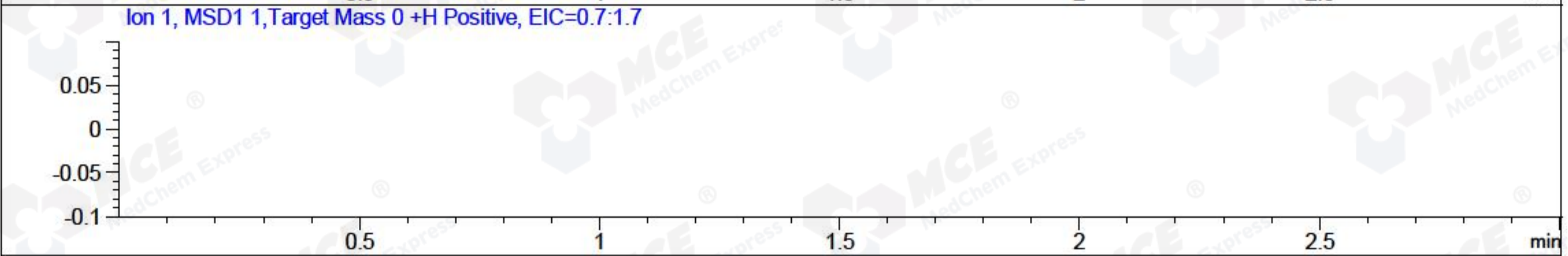
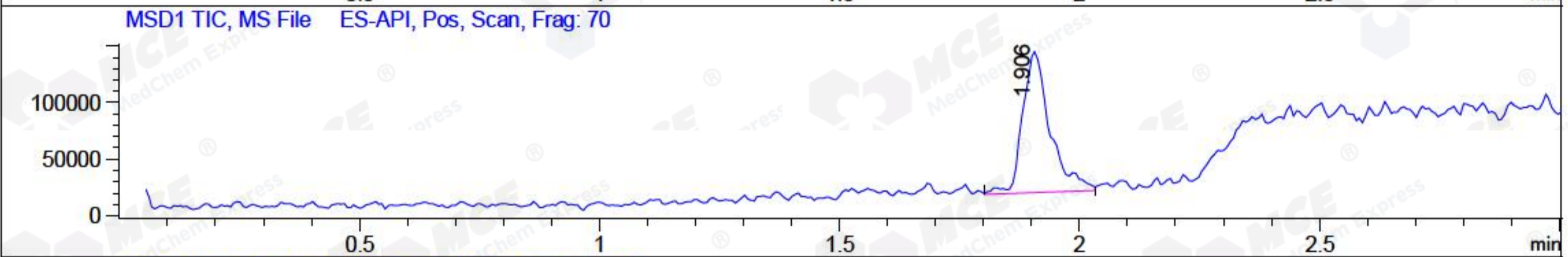
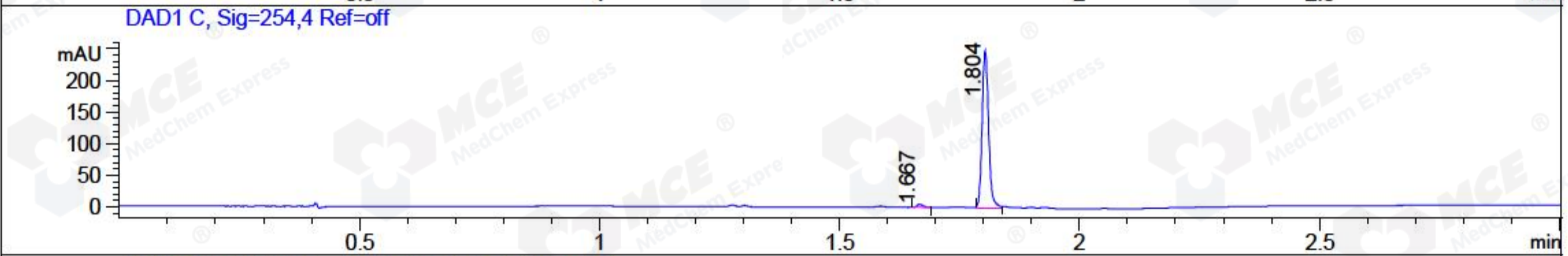
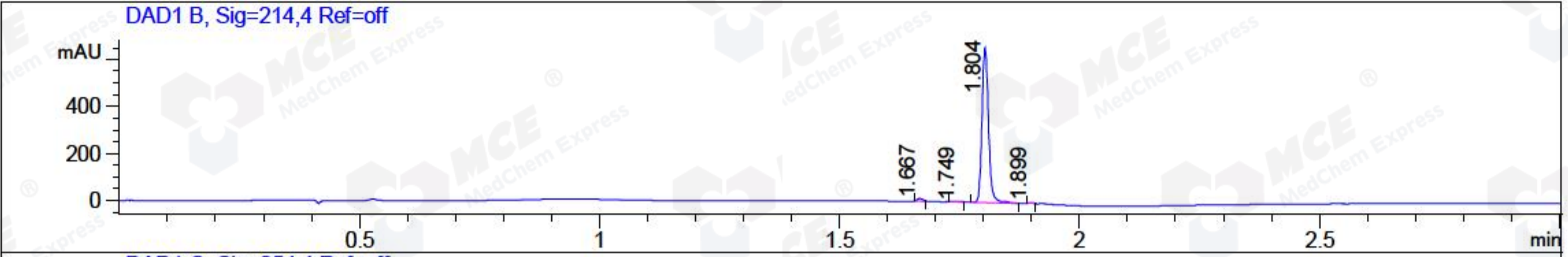


File ..32\1\DATA\2018\20180706\302\FSD5691-006-1.D Tgt Mass (CHM):
 Injection Date : 6 Jul 18 2:22 pm +0800 Seq. Line : 10
 Sample Name : FSD5691-006-1 Location : P2-F-05
 Acq. Operator : LQ_1052 Inj : 1
 Spec. Reported : MS Integration Inj Volume : 0.5 ul
 Acq. Method : D:\Chem32\1\data\2018\20180706\302\1-POS-3MIN-1.M
 Analysis Method : D:\CHEM32\1\DATA\2018\20180706\302\1-POS-3MIN-1.M
 Catalog No : HY-108715A Batch#31403 A-RP-314
 Method Info : Mobile Phase: A: water(0.01%TFA) B:ACN(0.01%TFA)
 Gradient: 5% to 95%B within 1.3 min
 Flow Rate :1.8ml/min
 Column :SunFire C18, 4.6*50mm,3.5um A-RP-314
 Oven Temperature : 45□



Integration Results for DAD1 B, Sig=214,4 Ref=off

RetTim	Width	Area	Height	Area%	MS (+)
1.67	0.01	8.87	11.55	1.39	141
1.75	0.02	2.36	2.16	0.37	141
1.80	0.02	625.40	661.16	98.01	141
1.90	0.01	1.47	2.64	0.23	279

Integration Results for DAD1 C, Sig=254,4 Ref=off

RetTim	Width	Area	Height	Area%	MS (+)
1.67	0.01	4.40	4.92	1.88	141
1.80	0.01	229.80	248.39	98.12	141

Integration Results for MSD1 TIC, MS File

RetTim	Width	Area	Height	Area%	MS (+)
1.91	0.06	499447.66	125198.61	100.00	578

Ret. Time: 1.91

<<<< POSITIVE SPECTRA >>>>

