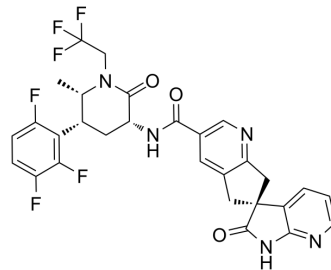


## (3R,5R,6S)-Atogepant

Cat. No.:	HY-109022A
Molecular Formula:	C <sub>29</sub> H <sub>23</sub> F <sub>6</sub> N <sub>5</sub> O <sub>3</sub>
Molecular Weight:	603.52
Target:	CGRP Receptor
Pathway:	GPCR/G Protein; Neuronal Signaling
Storage:	Powder    -20°C    3 years In solvent   -80°C    6 months -20°C    1 month



### BIOLOGICAL ACTIVITY

#### Description

(3R,5R,6S)-Atogepant ((3R,5R,6S)-MK-8031) is the enantiomer of [Atogepant](#) (HY-109022). [Atogepant](#) is a calcitonin gene-related peptide receptor (CGRP) antagonist. [Atogepant](#) can be used for researching migraine.

**Caution: Product has not been fully validated for medical applications. For research use only.**

Tel: 609-228-6898

Fax: 609-228-5909

E-mail: [tech@MedChemExpress.com](mailto:tech@MedChemExpress.com)

Address: 1 Deer Park Dr, Suite Q, Monmouth Junction, NJ 08852, USA