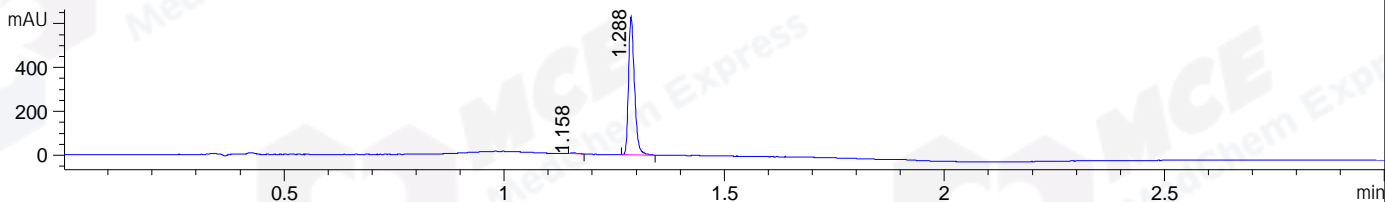
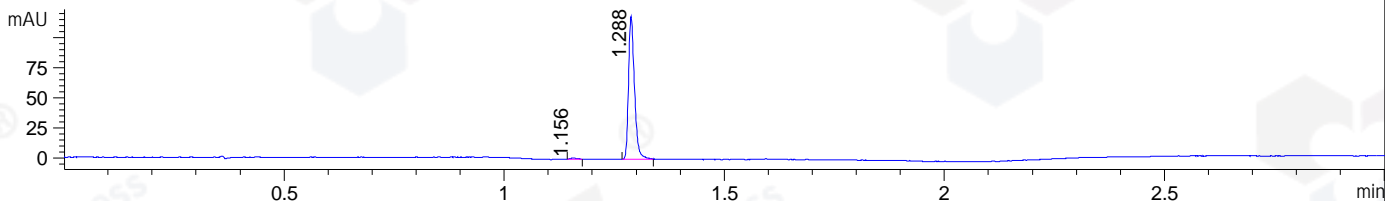


File ..\DATA\2019\20191118\761\BIZ2019-N15-CXL6.D Tgt Mass (CHM):
 Injection Date : 18 Nov 19 11:06 am +0800 Seq. Line : 27
 Sample Name : BIZ2019-N15-CXL6 Location : P1-A-03
 Acq. Operator : ZJ_1432 Inj : 1
 Spec. Reported : MS Integration Inj Volume : 0.5 ul
 Acq. Method : D:\Chem32\1\data\2019\20191118\761\1-POS-3MIN.M
 Analysis Method : D:\CHEM32\1\DATA\2019\20191118\761\1-POS-3MIN.M
 Catalog No : HY-109024 Batch#55434
 Method Info : Mobile Phase: A: water(0.01%TFA) B:ACN(0.01%TFA)
 Gradient: 5% to 95%B within 1.3 min
 Flow Rate :1.8ml/min
 Column :SunFire C18, 4.6*50mm,3.5um A-RP-433
 Oven Temperature : 45

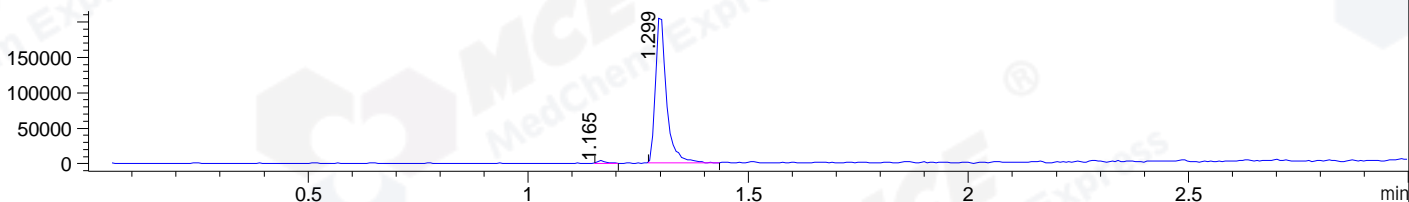
DAD1 B, Sig=214,4 Ref=off



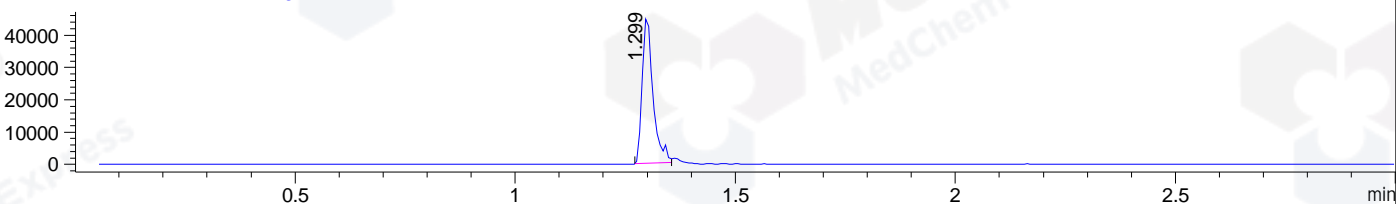
DAD1 C, Sig=254,4 Ref=off



MSD1 TIC, MS File ES-API, Pos, Scan, Frag: 70



Ion 410, MSD1 410, Target Mass 409 +H Positive, EIC=409.7:410.7



Integration Results for DAD1 B, Sig=214,4 Ref=off

RetTim	Width	Area	Height	Area%	MS (+)
1.16	0.02	4.92	5.14	0.82	141
1.29	0.02	591.91	631.34	99.18	410

Integration Results for DAD1 C, Sig=254,4 Ref=off

RetTim	Width	Area	Height	Area%	MS (+)
1.16	0.02	0.95	0.88	0.84	141
1.29	0.02	112.13	119.08	99.16	410

Integration Results for MSD1 TIC, MS File

RetTim	Width	Area	Height	Area%	MS (+)
1.17	0.02	4844.39	3821.39	1.32	ND
1.30	0.03	361084.13	214466.58	98.68	410

Ret. Time: 1.30

