

File ..1\DATA\2018\20181030\470\BIZ2018-O29-CXL7.D Tgt Mass (CHM):

Injection Date : 30 Oct 18 11:47 am +0800 Seq. Line : 27

Sample Name : BIZ2018-O29-CXL7 Location : PL-D-03

Acq. Operator : LQ_1052 Inj : 1

Spec. Reported : MS Integration Inj Volume : 1 ul

Acq. Method : D:\Chem32\1\data\2018\20181030\470\1-POS-3MIN-1.M

Analysis Method : D:\CHEM32\1\DATA\2018\20181030\470\1-POS-3MIN-1.M

Catalog No : HY-109059 Batch#34097 A-RP-314

Method Info : Mobile Phase: A: water(0.01%TFA) B:ACN(0.01%TFA)

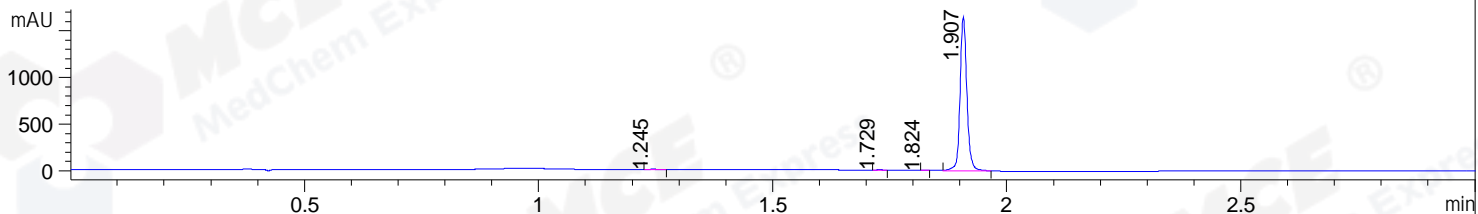
Gradient: 5% to 95%B within 1.3 min

Flow Rate :1.8ml/min

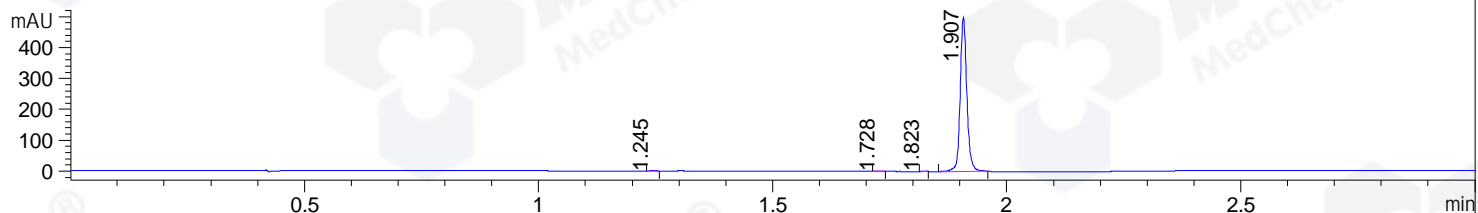
Column :SunFire C18, 4.6*50mm,3.5um A-RP-314

Oven Temperature : 45□

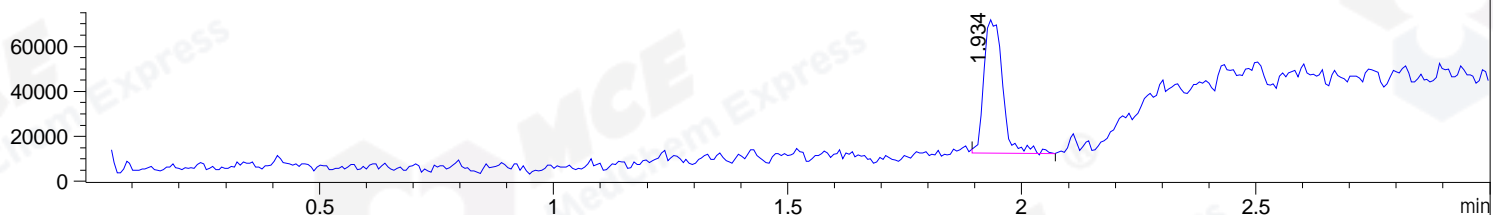
DAD1 B, Sig=214,4 Ref=off



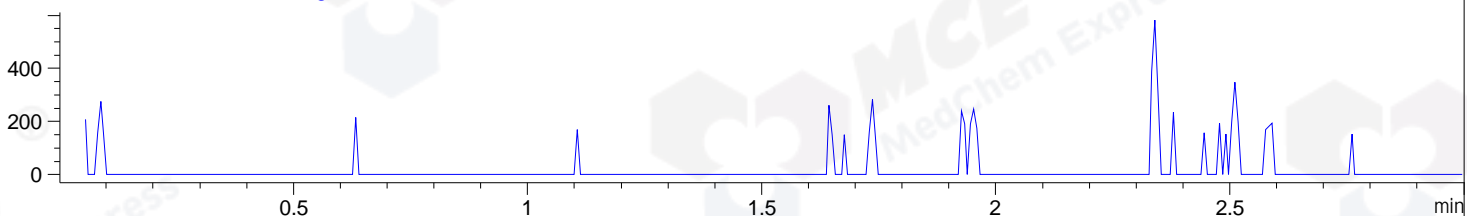
DAD1 C, Sig=254,4 Ref=off



MSD1 TIC, MS File ES-API, Pos, Scan, Frag: 70



Ion 488.1, MSD1 488.1, Target Mass 487.1 +H Positive, EIC=487.8:488.8



Integration Results for DAD1 B, Sig=214,4 Ref=off

RetTim	Width	Area	Height	Area%	MS (+)
1.24	0.01	5.32	6.04	0.32	ND
1.73	0.01	2.90	3.38	0.17	ND
1.82	0.01	0.46	0.68	0.03	ND
1.91	0.02	1672.18	1649.66	99.48	304

Integration Results for DAD1 C, Sig=254,4 Ref=off

RetTim	Width	Area	Height	Area%	MS (+)
1.24	0.01	2.14	2.60	0.43	602
1.73	0.01	1.15	1.32	0.23	ND
1.82	0.01	0.12	0.19	0.02	ND
1.91	0.02	494.34	500.05	99.32	304

Integration Results for MSD1 TIC, MS File

RetTim	Width	Area	Height	Area%	MS (+)
1.93	0.04	164434.13	59430.05	100.00	304

Ret. Time: 1.93

<<<< POSITIVE SPECTRA >>>>

ES-API Positive

