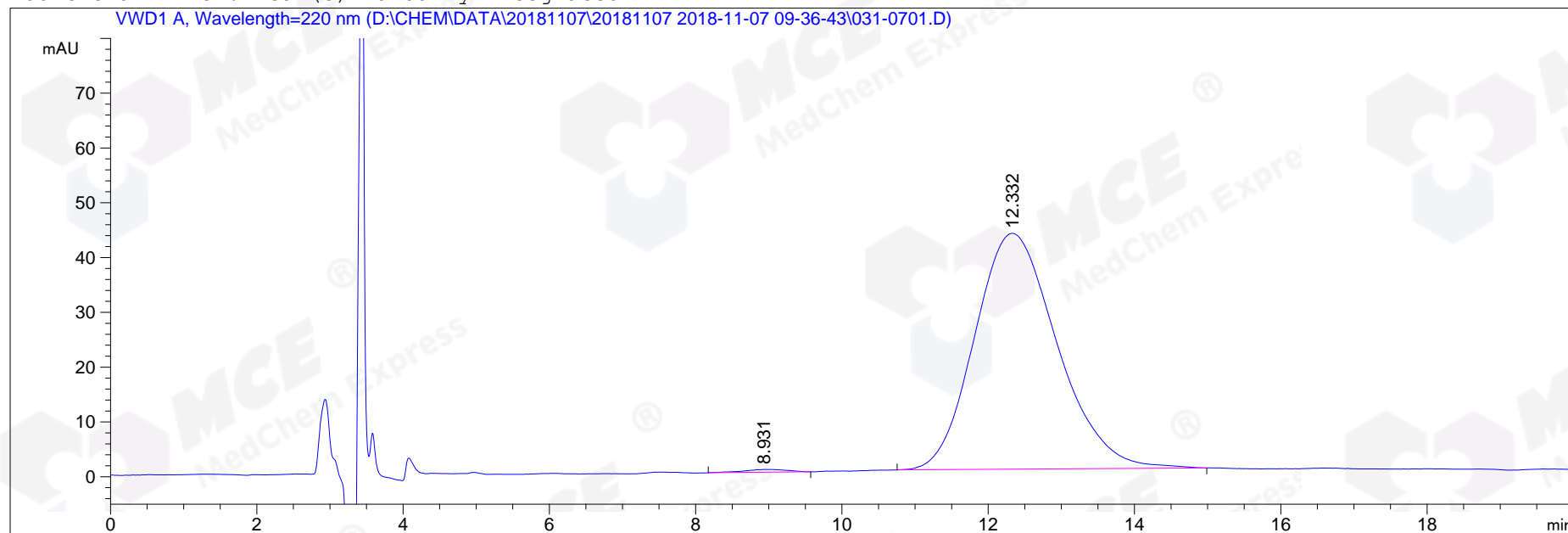


```

=====
Acq. Operator   : ZXM                      Seq. Line :    7
Acq. Instrument : HPLC-04                  Location  : Vial 31
Injection Date  : 11/7/2018 11:37:33 AM    Inj       :    1
                                           Inj Volume: 5.0 µl
Acq. Method    : D:\CHEM\DATA\20181107\20181107 2018-11-07 09-36-43\HY-109059,220NM,C2.M
Last changed   : 11/7/2018 10:53:27 AM by ZXM
Analysis Method: D:\CHEM\METHODS\HY-109059,200NM,C2.M
Last changed   : 11/7/2018 12:03:10 PM by ZXM
                (modified after loading)
Additional Info : Peak(s) manually integrated
    
```



=====
 Area Percent Report
 =====

```

Sorted By      :      Signal
Multiplier:    :      1.0000
Dilution:      :      1.0000
Use Multiplier & Dilution Factor with ISTDs
    
```

Signal 1: VWD1 A, Wavelength=220 nm

Peak #	RetTime [min]	Type	Width [min]	Area mAU*s	Height [mAU]	Area %
1	8.931	MM R	0.6731	20.72353	5.13135e-1	0.6114
2	12.332	BB	1.1564	3368.84155	43.03806	99.3886

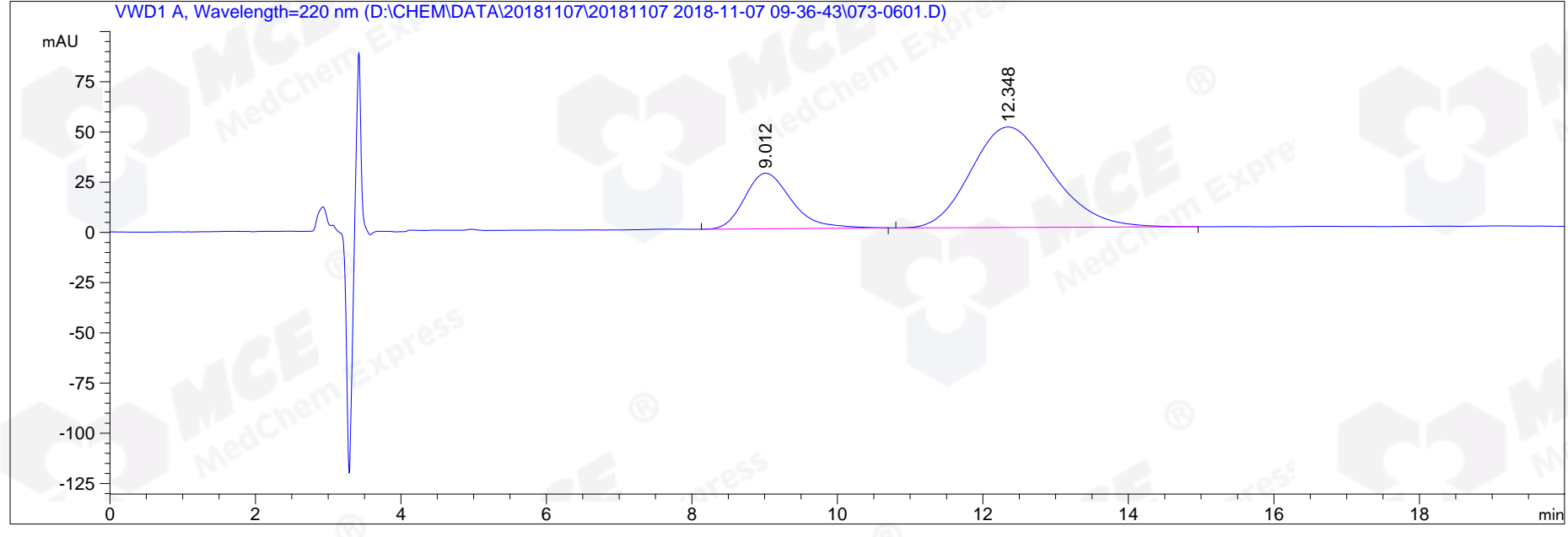
Totals : 3389.56509 43.55119

=====
 *** End of Report ***

```

=====
Acq. Operator   : ZXM                               Seq. Line    :    6
Acq. Instrument: HPLC-04                          Location     : Vial 73
Injection Date  : 11/7/2018 11:15:54 AM          Inj          :    1
                                                    Inj Volume   : 5.0 µl
Acq. Method     : D:\CHEM\DATA\20181107\20181107 2018-11-07 09-36-43\HY-109059,220NM,C2.M
Last changed    : 11/7/2018 10:53:27 AM by ZXM
Analysis Method : D:\CHEM\METHODS\HY-109059,220NM,C2.M
Last changed    : 11/7/2018 11:44:35 AM by ZXM
                (modified after loading)
Additional Info : Peak(s) manually integrated
    
```

VWD1 A, Wavelength=220 nm (D:\CHEM\DATA\20181107\20181107 2018-11-07 09-36-43\073-0601.D)



=====
 Area Percent Report
 =====

```

Sorted By      : Signal
Multiplier:    : 1.0000
Dilution:      : 1.0000
Use Multiplier & Dilution Factor with ISTDs
    
```

Signal 1: VWD1 A, Wavelength=220 nm

Peak #	RetTime [min]	Type	Width [min]	Area mAU*s	Height [mAU]	Area %
1	9.012	BB	0.6914	1239.84839	27.68437	24.1285
2	12.348	BB	1.1179	3898.67529	50.08123	75.8715
Totals :				5138.52368	77.76560	

=====
 *** End of Report ***