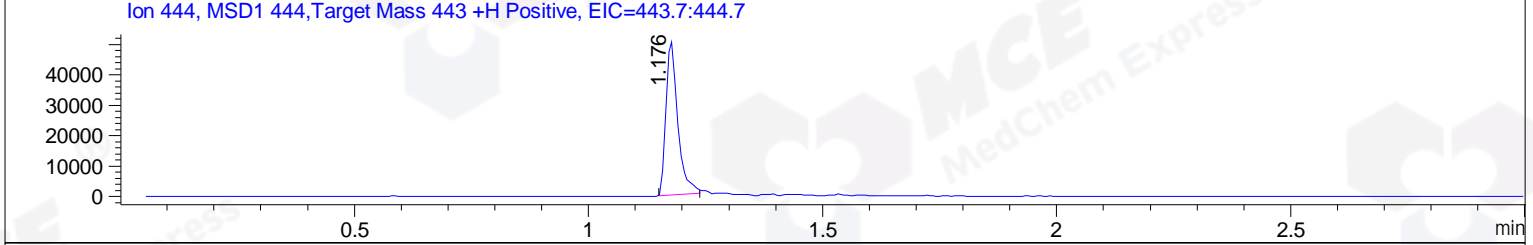
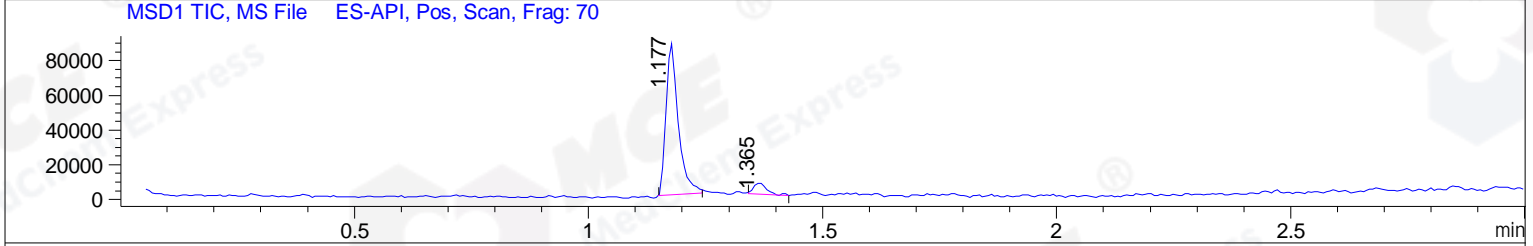
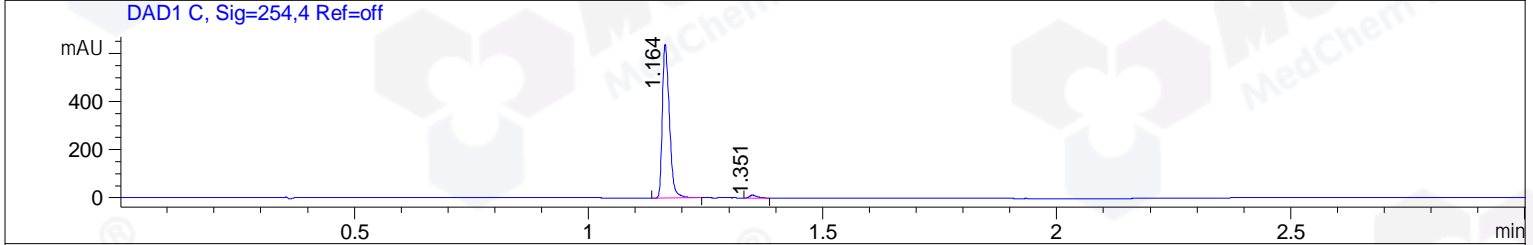
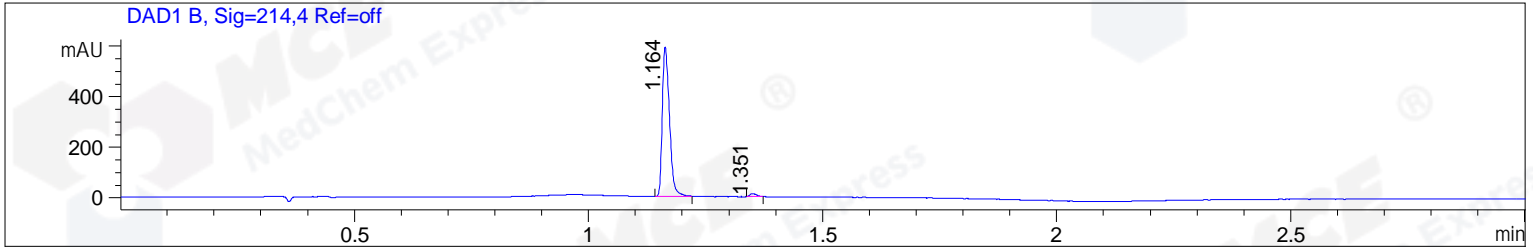


File ..1\DATA\2019\20191112\759\BIZ2019-N11-SCH5.D Tgt Mass (CHM):
 Injection Date : 12 Nov 19 2:38 pm +0800 Seq. Line : 68
 Sample Name : BIZ2019-N11-SCH5 Location : P1-C-05
 Acq. Operator : ZJ_1432 Inj : 1
 Spec. Reported : MS Integration Inj Volume : 1 ul
 Acq. Method : D:\Chem32\1\data\2019\20191112\759\1-POS-3MIN.M
 Analysis Method : D:\CHEM32\1\DATA\2019\20191112\759\1-POS-3MIN.M
 Catalog No : HY-109091 Batch#52259
 Method Info : Mobile Phase: A: water(0.01%TFA) B:ACN(0.01%TFA)
 Gradient: 5% to 95%B within 1.3 min
 Flow Rate :1.8ml/min
 Column :SunFire C18, 4.6*50mm,3.5um A-RP-433
 Oven Temperature : 45



Integration Results for DAD1 B, Sig=214,4 Ref=off

RetTim	Width	Area	Height	Area%	MS (+)
1.16	0.02	630.48	590.77	98.22	444
1.35	0.02	11.44	11.98	1.78	430

Integration Results for DAD1 C, Sig=254,4 Ref=off

RetTim	Width	Area	Height	Area%	MS (+)
1.16	0.02	671.15	640.30	98.16	444
1.35	0.02	12.59	11.93	1.84	ND

Integration Results for MSD1 TIC, MS File

RetTim	Width	Area	Height	Area%	MS (+)
1.18	0.03	160931.58	87803.66	92.90	444
1.36	0.03	12308.13	6367.00	7.10	ND

Ret. Time: 1.18

<<<< POSITIVE SPECTRA >>>>

ES-API Positive

