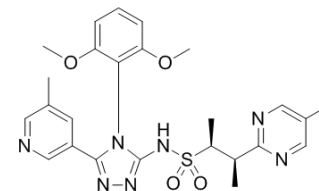


Azelaprag

Cat. No.:	HY-109111
CAS No.:	2049980-18-7
Molecular Formula:	C ₂₅ H ₂₉ N ₇ O ₄ S
Molecular Weight:	523.61
Target:	Others
Pathway:	Others
Storage:	Please store the product under the recommended conditions in the COA.



BIOLOGICAL ACTIVITY

Description	Azelaprag (Example 263.0) is an apelin receptor agonist drug candidate ^[1] .
IC ₅₀ & Target	Apelin receptor ^[1] .

REFERENCES

[1]. WO2016187308A1.

Caution: Product has not been fully validated for medical applications. For research use only.

Tel: 609-228-6898

Fax: 609-228-5909

E-mail: tech@MedChemExpress.com

Address: 1 Deer Park Dr, Suite Q, Monmouth Junction, NJ 08852, USA