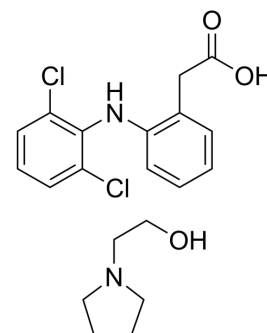


Diclofenac epolamine

Cat. No.:	HY-109547
CAS No.:	119623-66-4
Molecular Formula:	C ₂₀ H ₂₄ Cl ₂ N ₂ O ₃
Molecular Weight:	411.32
Target:	COX
Pathway:	Immunology/Inflammation
Storage:	4°C, protect from light * In solvent : -80°C, 6 months; -20°C, 1 month (protect from light)



BIOLOGICAL ACTIVITY

Description	Flector Patch (Diclofenac epolamine) is a non-steroidal anti-inflammatory drug (NSAID) ^[1] . Flector Patch is used for relieving arthritis Pain, acute Pain, osteoarthritis, and actinic Keratosis. Flector Patch has good skin absorption characteristics without local adverse reactions and allergies ^[2] .
In Vitro	Flector Patch (Diclofenac epolamine) (1.3% w/w, 24 hours) increases diclofenac partitioning into the skin ^[1] . Flector Patch (Diclofenac epolamine) (1.3% w/w) loaded by Microemulsion (ME) enhances the transport of drug through skin and sustains to 12 h after removal of ME ^[2] . MCE has not independently confirmed the accuracy of these methods. They are for reference only.
In Vivo	Flector Patch (Diclofenac epolamine) (1.3% w/w, external application) displays effective in treating inflammatory conditions ^[2] . MCE has not independently confirmed the accuracy of these methods. They are for reference only.
Animal Model:	Rat paw edema inflammation model (induced with carrageenan) ^[2]
Dosage:	1.3% w/w
Administration:	External application
Result:	Inhibited edema and showed anti-inflammatory efficacy at 6 hours after application.

REFERENCES

[1]. Del Río-Sancho S, et al. Topical delivery of diclofenac into and across equine skin from a novel liquid diclofenac epolamine formulation. J Vet Pharmacol Ther. 2016 Dec. 39(6):578-583.

[2]. Fouad SA, Basalious EB, El-Nabarawi MA, Tayel SA. Microemulsion and poloxamer microemulsion-based gel for sustained transdermal delivery of diclofenac epolamine using in-skin drug depot: in vitro/in vivo evaluation. Int J Pharm. 2013 Sep 10;453(2):569-78.

Caution: Product has not been fully validated for medical applications. For research use only.

Tel: 609-228-6898

Fax: 609-228-5909

E-mail: tech@MedChemExpress.com

Address: 1 Deer Park Dr, Suite Q, Monmouth Junction, NJ 08852, USA