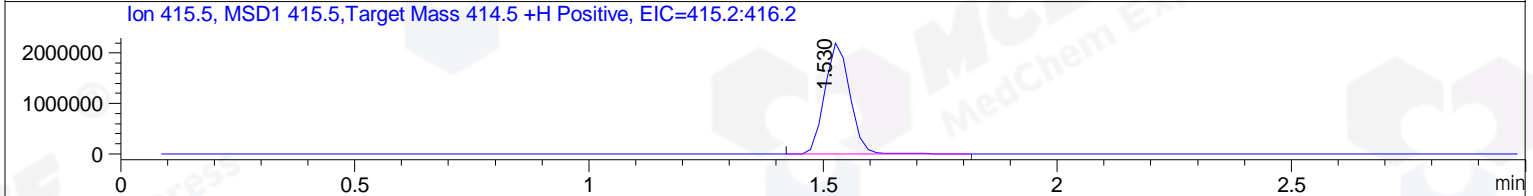
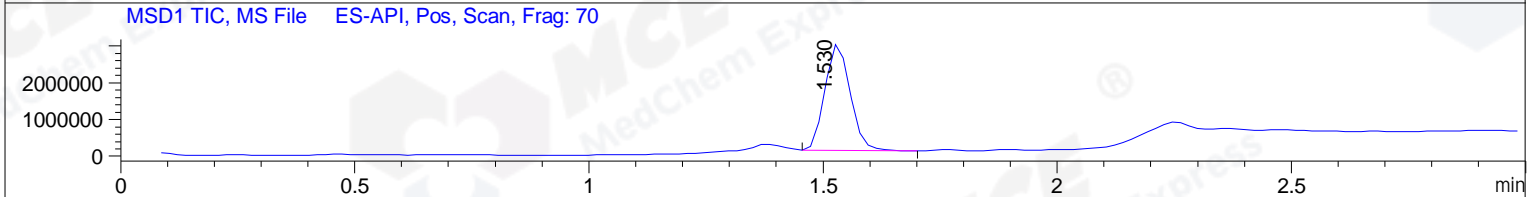
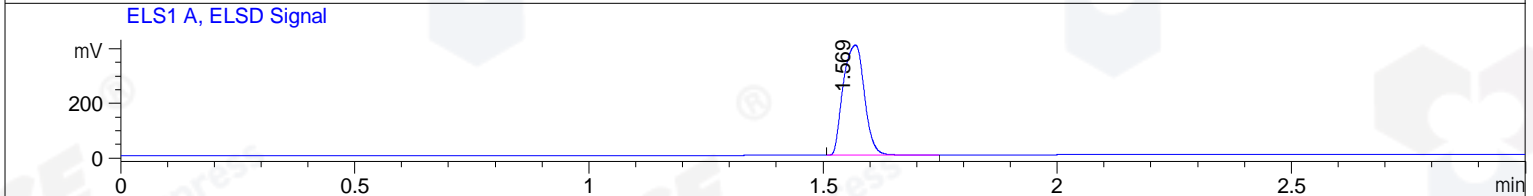
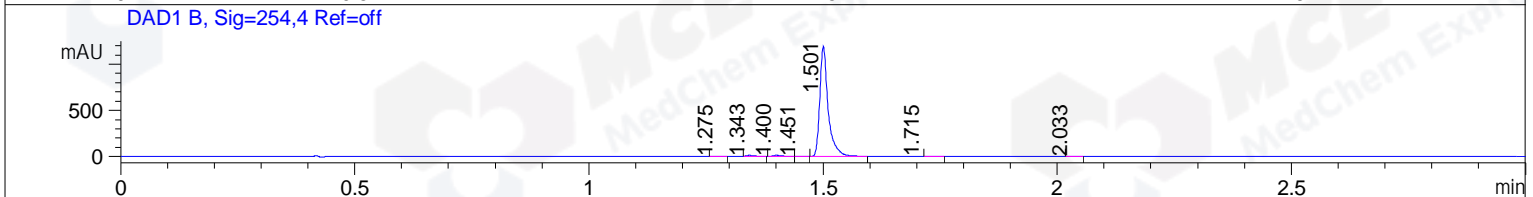
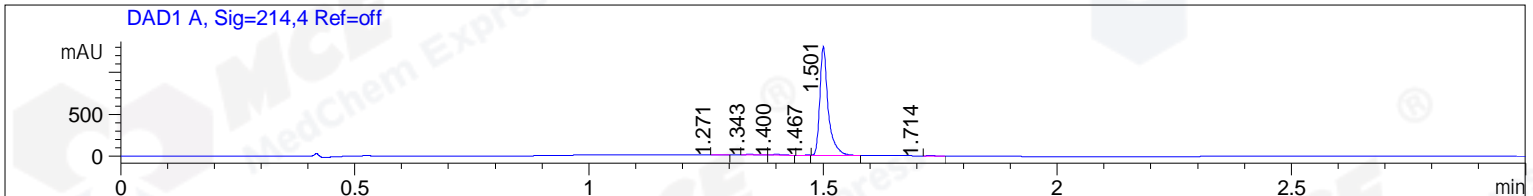


File ..ata\20171201\20171201-2\CPK2017-N30-16392.D Tgt Mass (CHM):
 Injection Date : 1 Dec 17 12:39 pm +0800 Seq. Line : 17
 Sample Name : CPK2017-N30-16392 Location : P2-B-03
 Acq. Operator : ZLJ_587 Inj : 1
 Spec. Reported : MS Integration Inj Volume : 2 ul
 Acq. Method : D:\LCMS03\Data\20171201\20171201-2\1-POS-3MIN.M
 Analysis Method : D:\LCMS03\Data\20171201\20171201-2\1-POS-3MIN.M
 Catalog No : HY-10961 Batch#16392
 Method Info : Mobile Phase: A: water(0.01%TFA) B:ACN(0.01%TFA)
 Gradient: 5% to 95%B within 1.3 min
 Flow Rate :1.8ml/min
 Column :SunFire C18, 4.6*50mm,3.5um A-RP-186
 Oven Temperature : 45C



Integration Results for DAD1 A, Sig=214,4 Ref=off

RetTim	Width	Area	Height	Area%	MS (+)
1.27	0.02	0.89	0.73	0.05	461
1.34	0.02	13.28	11.70	0.82	702
1.40	0.02	13.55	11.85	0.83	702
1.47	0.01	0.46	0.67	0.03	375
1.50	0.02	1594.41	1296.91	98.10	415
1.71	0.02	2.76	-0.19	0.17	390

Integration Results for DAD1 B, Sig=254,4 Ref=off

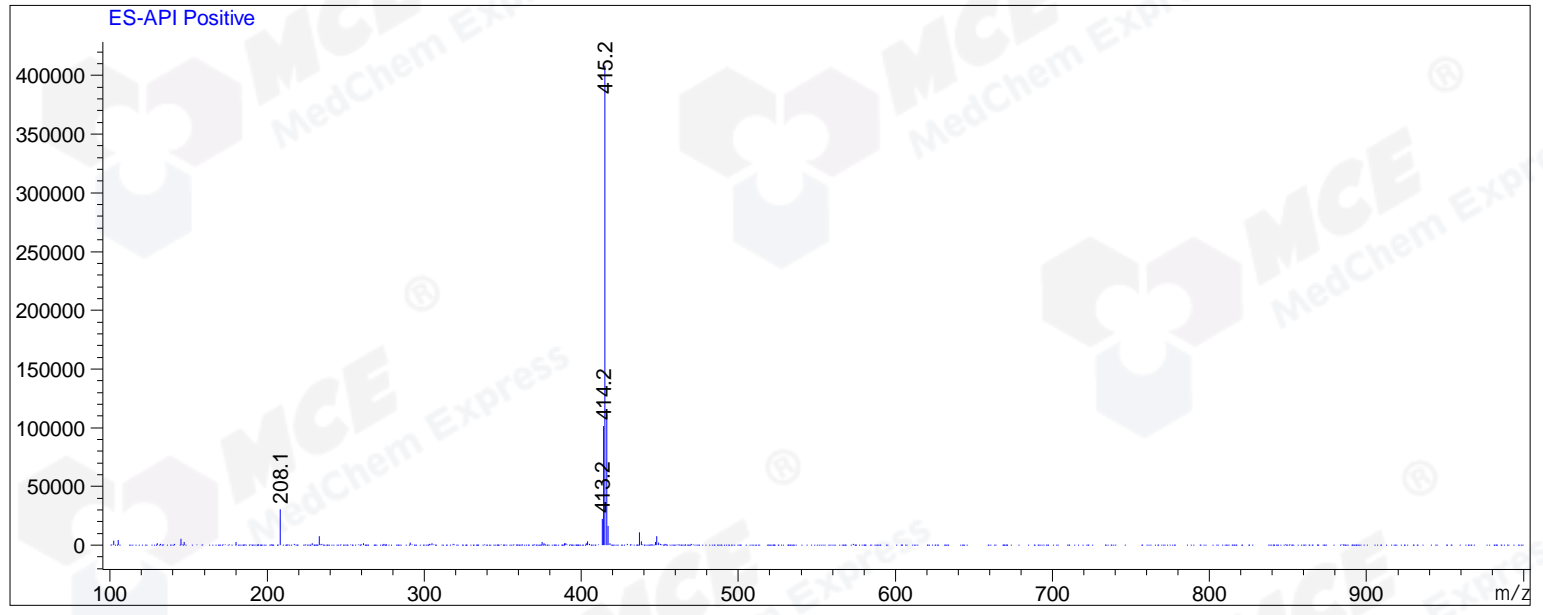
RetTim	Width	Area	Height	Area%	MS (+)
1.27	0.02	0.79	0.72	0.05	461
1.34	0.02	10.42	9.98	0.70	702
1.40	0.02	12.01	10.52	0.81	702
1.45	0.01	0.51	0.58	0.03	375
1.50	0.02	1462.83	1186.31	98.11	415
1.72	0.02	3.46	0.29	0.23	390
2.03	0.02	1.06	1.10	0.07	233

Integration Results for MSD1 TIC, MS File

RetTim	Width	Area	Height	Area%	MS (+)
1.53	0.06	10926932.00	2901549.50	100.00	415

Ret. Time: 1.53

<<<< POSITIVE SPECTRA >>>>



*** End of Report ***