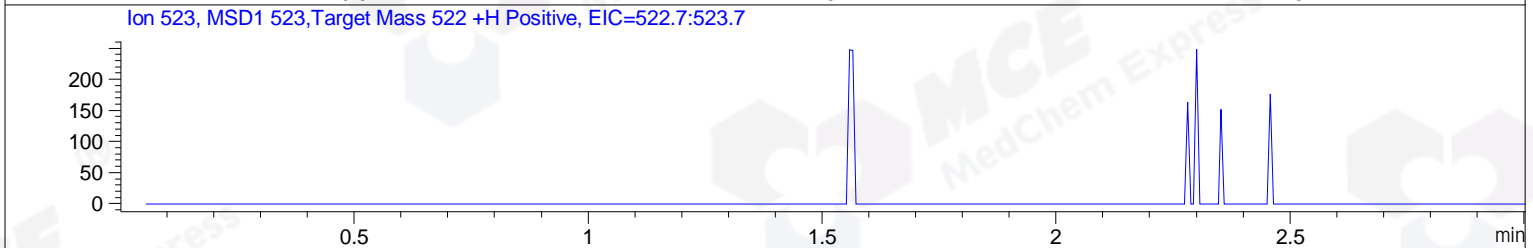
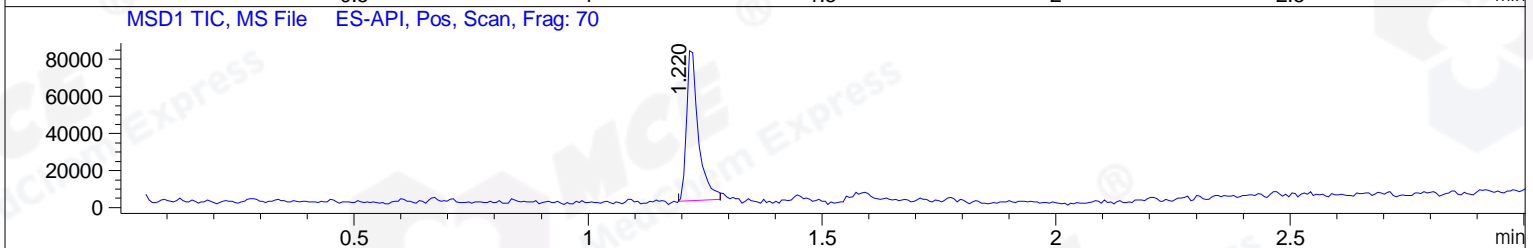
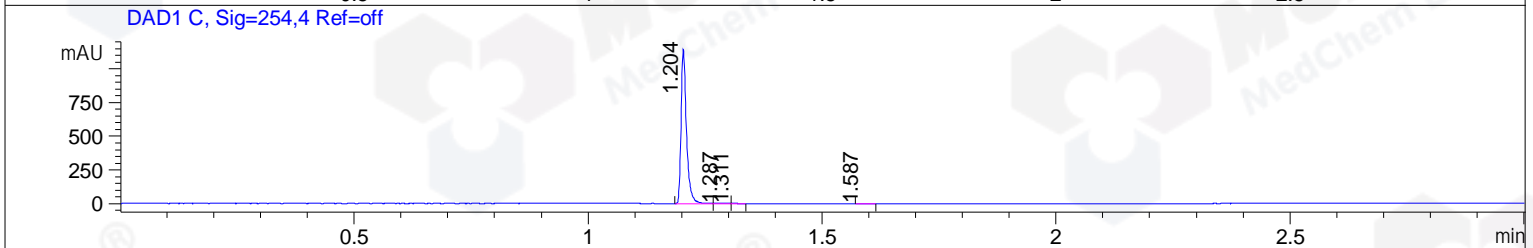
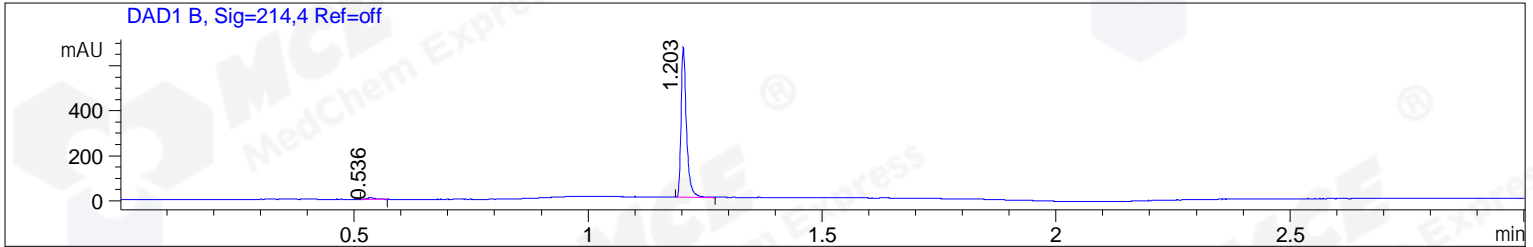


File ..DATA\2020\20200630\1020\BIZ2020-629-SCH6-.D Tgt Mass (CHM):  
 Injection Date : 30 Jun 20 12:10 pm +0800 Seq. Line : 46  
 Sample Name : BIZ2020-629-SCH6 Location : PL-B-06  
 Acq. Operator : ZJ\_1432 Inj : 1  
 Spec. Reported : MS Integration Inj Volume : 0.25 ul  
 Acq. Method : D:\Chem32\1\data\2020\20200630\1020\1-POS-3MIN.M  
 Analysis Method : D:\CHEM32\1\DATA\2020\20200630\1020\1-POS-3MIN.M  
 Catalog No : HY-10981A  
 Method Info : Mobile Phase: A: water(0.01%TFA) B:ACN(0.01%TFA)  
 Gradient: 5% to 95%B within 1.3 min  
 Flow Rate :1.8ml/min  
 Column :SunFire C18, 4.6\*50mm,3.5um A-RP-607  
 Oven Temperature : 45



Integration Results for DAD1 B, Sig=214,4 Ref=off

RetTim	Width	Area	Height	Area%	MS (+)
0.54	0.02	7.97	6.81	1.46	ND
1.20	0.01	536.66	668.65	98.54	427

Integration Results for DAD1 C, Sig=254,4 Ref=off

RetTim	Width	Area	Height	Area%	MS (+)
1.20	0.01	917.86	1146.85	99.27	427
1.29	0.03	3.76	2.36	0.41	ND
1.31	0.01	1.31	1.54	0.14	ND
1.59	0.02	1.65	1.30	0.18	ND

Integration Results for MSD1 TIC, MS File

RetTim	Width	Area	Height	Area%	MS (+)
1.22	0.03	142581.27	84419.09	100.00	427

Ret. Time: 1.22

<<<< POSITIVE SPECTRA >>>>

ES-API Positive

