

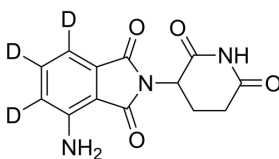
Pomalidomide-d₃

Cat. No.: HY-10984S1
CAS No.: 2093128-28-8
Batch No.: 256850
Chemical Name: 1H-Isoindole-1,3(2H)-dione-4,5,6-d₃, 7-amino-2-(2,6-dioxo-3-piperidinyl)-

PHYSICAL AND CHEMICAL PROPERTIES

Molecular Formula: C₁₃H₈D₃N₃O₄
Molecular Weight: 276.26
Storage: Powder -20°C 3 years
 4°C 2 years
 In solvent -80°C 6 months
 -20°C 1 month

Chemical Structure:



ANALYTICAL DATA

Appearance: Light yellow to yellow (Solid)
Purity: ≥99.0%
Isotopic Enrichment: 99.50%
Conclusion: The product has been tested and complies with the given specifications.

Caution: Product has not been fully validated for medical applications. For research use only.

Tel: 609-228-6898

Fax: 609-228-5909

E-mail: tech@MedChemExpress.com

Address: 1 Deer Park Dr, Suite Q, Monmouth Junction, NJ 08852, USA