

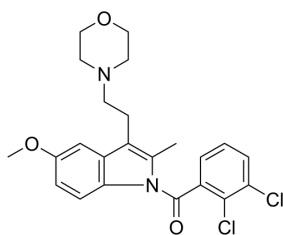
GW-405833

Cat. No.: HY-110036
 CAS No.: 180002-83-9
 Batch No.: 265348
 Chemical Name: Methanone, (2,3-dichlorophenyl)[5-methoxy-2-methyl-3-[2-(4-morpholinyl)ethyl]-1H-indol-1-yl]

PHYSICAL AND CHEMICAL PROPERTIES

Molecular Formula: $C_{23}H_{24}Cl_2N_2O_3$
 Molecular Weight: 447.35
 Storage: Powder -20°C 3 years
 4°C 2 years
 In solvent -80°C 6 months
 -20°C 1 month

Chemical Structure:



ANALYTICAL DATA

Appearance: Light yellow to yellow (Solid)
 1H NMR Spectrum: Consistent with structure
 MS: Consistent with structure
 Purity (HPLC): 99.12%
 Conclusion: The product has been tested and complies with the given specifications.

Caution: Product has not been fully validated for medical applications. For research use only.

Tel: 609-228-6898

Fax: 609-228-5909

E-mail: tech@MedChemExpress.com

Address: 1 Deer Park Dr, Suite Q, Monmouth Junction, NJ 08852, USA