

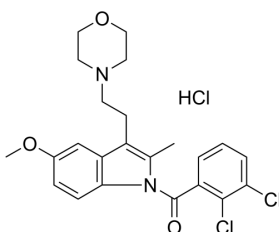
## GW405833 (hydrochloride)

Cat. No.:	HY-110036A
CAS No.:	1202865-22-2
Batch No.:	319563
Chemical Name:	Methanone, (2,3-dichlorophenyl)[5-methoxy-2-methyl-3-[2-(4-morpholinyl)ethyl]-1H-indol-1-yl]-, hydrochloride (1:1)

### PHYSICAL AND CHEMICAL PROPERTIES

Molecular Formula:	C <sub>23</sub> H <sub>25</sub> Cl <sub>3</sub> N <sub>2</sub> O <sub>3</sub>
Molecular Weight:	483.82
Storage:	4°C, sealed storage, away from moisture * In solvent : -80°C, 6 months; -20°C, 1 month (sealed storage, away from moisture)

#### Chemical Structure:



### ANALYTICAL DATA

Appearance:	White to off-white (Solid)
<sup>1</sup> H NMR Spectrum:	Consistent with structure
LCMS:	Consistent with structure
Purity (LCMS):	99.59%
Conclusion:	The product has been tested and complies with the given specifications.

**Caution: Product has not been fully validated for medical applications. For research use only.**

Tel: 609-228-6898

Fax: 609-228-5909

E-mail: tech@MedChemExpress.com

Address: 1 Deer Park Dr, Suite Q, Monmouth Junction, NJ 08852, USA