

Lisuride (maleate)

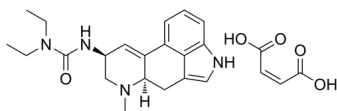
Cat. No.: HY-110080
Batch No.: 392223
CAS No.: 19875-60-6
Molecular Formula: C₂₄H₃₀N₄O₅

ANALYTICAL DATA

Theoretical: C(63.42%), H(6.65%), N(12.33%)

Result: C(63.35%), H(6.69%), N(12.25%)

Chemical Structure:



Caution: Product has not been fully validated for medical applications. For research use only.

Tel: 609-228-6898

Fax: 609-228-5909

E-mail: tech@MedChemExpress.com

Address: 1 Deer Park Dr, Suite Q, Monmouth Junction, NJ 08852, USA