

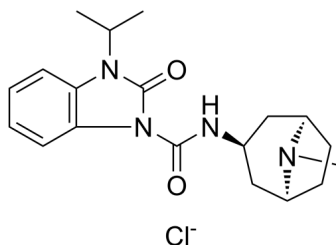
BIMU 8

Cat. No.: HY-110094
Batch No.: 190225
CAS No.: 134296-40-5
Molecular Formula: C₁₉H₂₆ClN₄O₂⁻

ANALYTICAL DATA

Theoretical: C(60.39%), H(6.93%), N(14.83%)
Result: C(57.28%), H(7.13%), N(14.16%)

Chemical Structure:



Caution: Product has not been fully validated for medical applications. For research use only.

Tel: 609-228-6898

Fax: 609-228-5909

E-mail: tech@MedChemExpress.com

Address: 1 Deer Park Dr, Suite Q, Monmouth Junction, NJ 08852, USA