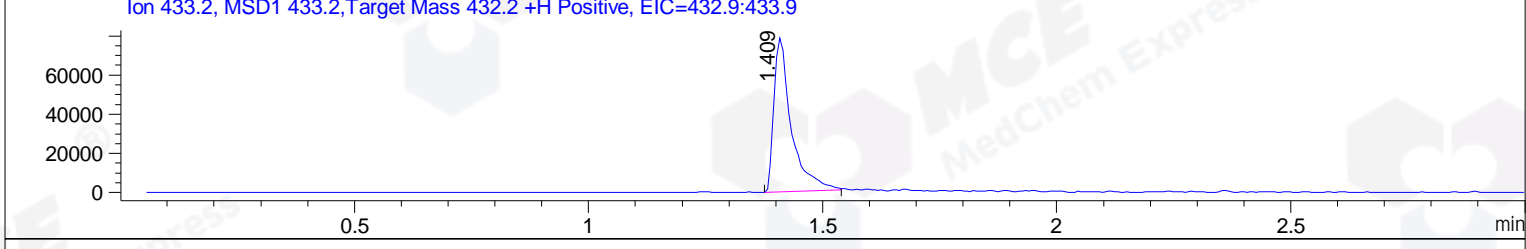
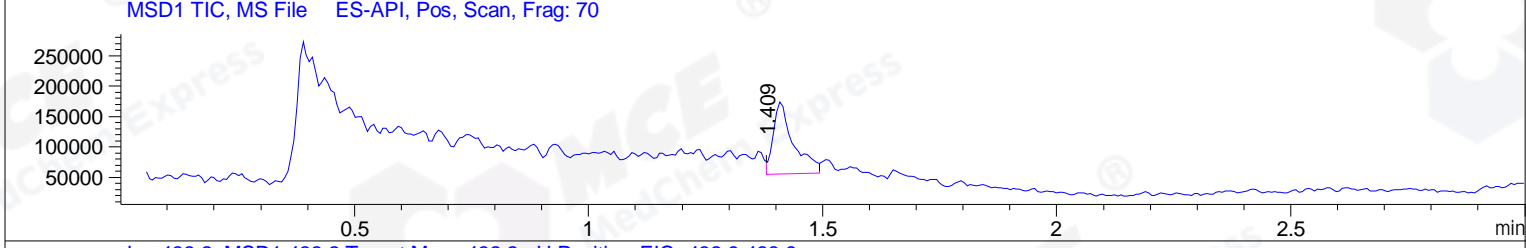
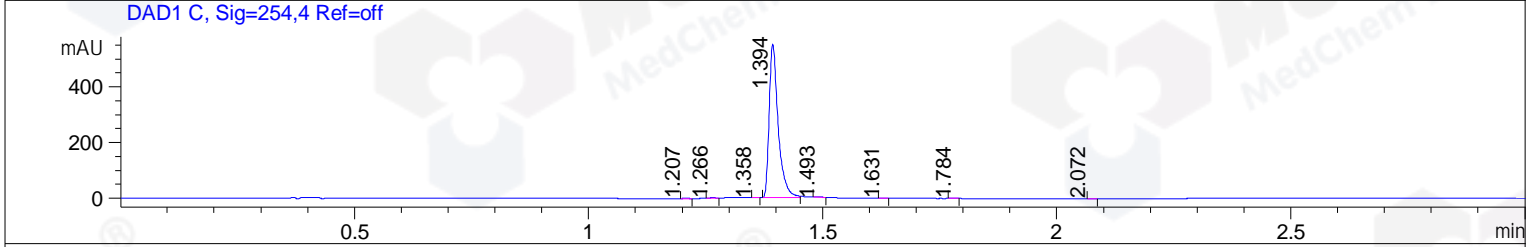
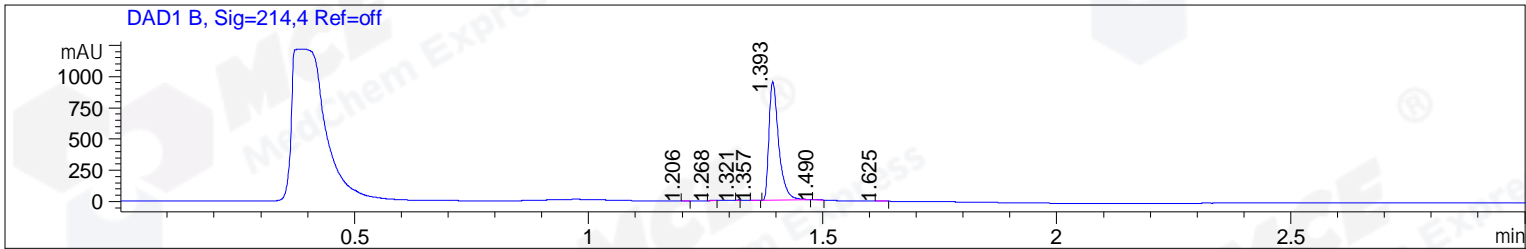


File ..1\DATA\2019\20190215\552\BIZ2019-214-CXL2.D Tgt Mass (CHM):
 Injection Date : 15 Feb 19 9:53 am +0800 Seq. Line : 8
 Sample Name : BIZ2019-214-CXL2 Location : P1-B-07
 Acq. Operator : LQ_1052 Inj : 1
 Spec. Reported : MS Integration Inj Volume : 1 ul
 Acq. Method : D:\Chem32\1\data\2019\20190215\552\1-POS-3MIN-1.M
 Analysis Method : D:\CHEM32\1\DATA\2019\20190215\552\1-POS-3MIN-1.M
 Catalog No : HY-110101 Batch#37674 BY DMSO
 Method Info : Mobile Phase: A: water(0.01%TFA) B:ACN(0.01%TFA)
 Gradient: 5% to 95%B within 1.3 min
 Flow Rate :1.8ml/min
 Column :SunFire C18, 4.6*50mm,3.5um A-RP-314
 Oven Temperature : 45



Integration Results for DAD1 B, Sig=214,4 Ref=off

RetTim	Width	Area	Height	Area%	MS (+)
1.21	0.01	0.92	1.22	0.07	157
1.27	0.01	1.64	1.63	0.12	157
1.32	0.01	0.23	0.73	0.02	157
1.36	0.01	1.68	1.95	0.12	157
1.39	0.02	1376.95	944.97	99.36	157
1.49	0.02	2.90	3.04	0.21	157
1.63	0.02	1.51	1.40	0.11	157

Integration Results for DAD1 C, Sig=254,4 Ref=off

RetTim	Width	Area	Height	Area%	MS (+)
1.21	0.01	0.52	0.61	0.07	157
1.27	0.02	1.23	1.24	0.17	157
1.36	0.01	0.60	0.80	0.08	157
1.39	0.02	736.97	551.23	99.32	157
1.49	0.02	1.54	1.59	0.21	157
1.63	0.02	0.36	0.38	0.05	157
1.78	0.01	0.37	0.46	0.05	157

2.07 0.01 0.42 0.54 0.06 157

Integration Results for MSD1 TIC, MS File

RetTim	Width	Area	Height	Area%	MS (+)
1.41	0.04	352992.16	119046.47	100.00	157

Ret. Time: 1.41

<<<< POSITIVE SPECTRA >>>>

ES-API Positive

