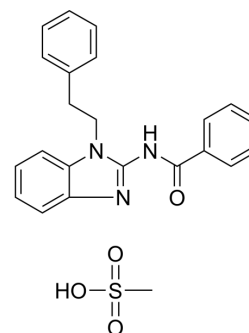


GW438014A

Cat. No.:	HY-110107		
CAS No.:	469861-49-2		
Molecular Formula:	C ₂₃ H ₂₃ N ₃ O ₄ S		
Molecular Weight:	437.51		
Target:	Neuropeptide Y Receptor		
Pathway:	GPCR/G Protein; Neuronal Signaling		
Storage:	Powder	-20°C	3 years
		4°C	2 years
	In solvent	-80°C	6 months
		-20°C	1 month



SOLVENT & SOLUBILITY

In Vitro

DMSO : 250 mg/mL (571.42 mM; Need ultrasonic)

Solvent	Mass	Concentration		
		1 mg	5 mg	10 mg
Preparing Stock Solutions	1 mM	2.2857 mL	11.4283 mL	22.8566 mL
	5 mM	0.4571 mL	2.2857 mL	4.5713 mL
	10 mM	0.2286 mL	1.1428 mL	2.2857 mL

Please refer to the solubility information to select the appropriate solvent.

BIOLOGICAL ACTIVITY

Description

GW438014A is a potent and selective NPY-Y5 receptor antagonist. GW438014A inhibits food intake and reduces body weight gain in obese rodents^[1].

In Vivo

GW438014A (10 mg/kg; i.p.; daily, for 7 d) inhibits spontaneous as well as overnight fasting-induced and NPY-induced feeding in rats and in food-deprived genetically obese ob/ob mice^[1].

MCE has not independently confirmed the accuracy of these methods. They are for reference only.

Animal Model:	obese ob/ob mice ^[1]
Dosage:	10 mg/kg
Administration:	intraperitoneal injection; daily, for 7 d
Result:	Decreased the rate of weight gain in both lean and obese rats.

REFERENCES

[1]. Daniels AJ, et, al. Food intake inhibition and reduction in body weight gain in lean and obese rodents treated with GW438014A, a potent and selective NPY-Y5 receptor antagonist. Regul Pept. 2002 Jun 15;106(1-3):47-54.

Caution: Product has not been fully validated for medical applications. For research use only.

Tel: 609-228-6898

Fax: 609-228-5909

E-mail: tech@MedChemExpress.com

Address: 1 Deer Park Dr, Suite Q, Monmouth Junction, NJ 08852, USA