

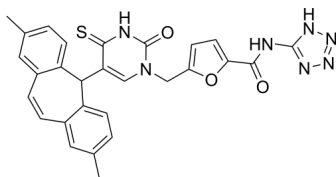
AR-C118925XX

Cat. No.: HY-110126
Batch No.: 279129
CAS No.: 216657-60-2
Molecular Formula: C₂₈H₂₃N₇O₃S

ANALYTICAL DATA

Theoretical: C(61.02%), H(4.48%), N(17.79%)
Result: C(60.93%), H(4.40%), N(17.82%)

Chemical Structure:



Caution: Product has not been fully validated for medical applications. For research use only.

Tel: 609-228-6898

Fax: 609-228-5909

E-mail: tech@MedChemExpress.com

Address: 1 Deer Park Dr, Suite Q, Monmouth Junction, NJ 08852, USA