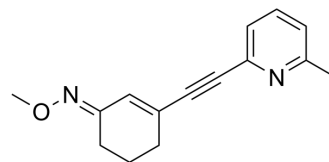


ABP688

Cat. No.:	HY-110141
CAS No.:	924298-51-1
Molecular Formula:	C ₁₅ H ₁₆ N ₂ O
Molecular Weight:	240.3
Target:	mGluR
Pathway:	GPCR/G Protein; Neuronal Signaling
Storage:	Please store the product under the recommended conditions in the Certificate of Analysis.



BIOLOGICAL ACTIVITY

Description	ABP688 is a high affinity human mGluR5 antagonist with anK _i of 1.7 nM. Radioisotope-labeled ABP688 can be used as a PET tracer for clinical imaging of the mGlu5 receptor ^[1] .
IC₅₀ & Target	human mGluR5 1.7 nM (K _i)

REFERENCES

[1]. Hintermann S, et al. ABP688, a novel selective and high affinity ligand for the labeling of mGlu5 receptors: identification, in vitro pharmacology, pharmacokinetic and biodistribution studies. *Bioorg Med Chem.* 2007 Jan 15;15(2):903-14.

Caution: Product has not been fully validated for medical applications. For research use only.

Tel: 609-228-6898

Fax: 609-228-5909

E-mail: tech@MedChemExpress.com

Address: 1 Deer Park Dr, Suite Q, Monmouth Junction, NJ 08852, USA