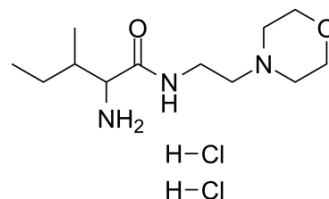


## (Rac)-LM11A-31 dihydrochloride

**Cat. No.:** HY-110155A  
**CAS No.:** 1214672-15-7  
**Molecular Formula:** C<sub>12</sub>H<sub>27</sub>Cl<sub>2</sub>N<sub>3</sub>O<sub>2</sub>  
**Molecular Weight:** 316.27  
**Target:** Others  
**Pathway:** Others  
**Storage:** 4°C, stored under nitrogen, away from moisture  
 \* In solvent : -80°C, 6 months; -20°C, 1 month (stored under nitrogen, away from moisture)



### SOLVENT & SOLUBILITY

#### In Vitro

H<sub>2</sub>O : ≥ 200 mg/mL (632.37 mM)  
 Ethanol : 100 mg/mL (316.19 mM; Need ultrasonic)  
 \* "≥" means soluble, but saturation unknown.

Preparing Stock Solutions	Solvent Concentration	Mass		
		1 mg	5 mg	10 mg
	1 mM	3.1619 mL	15.8093 mL	31.6186 mL
	5 mM	0.6324 mL	3.1619 mL	6.3237 mL
	10 mM	0.3162 mL	1.5809 mL	3.1619 mL

Please refer to the solubility information to select the appropriate solvent.

#### In Vivo

- Add each solvent one by one: 10% EtOH >> 40% PEG300 >> 5% Tween-80 >> 45% saline  
Solubility: ≥ 2.5 mg/mL (7.90 mM); Clear solution
- Add each solvent one by one: 10% EtOH >> 90% (20% SBE-β-CD in saline)  
Solubility: ≥ 2.5 mg/mL (7.90 mM); Clear solution
- Add each solvent one by one: 10% EtOH >> 90% corn oil  
Solubility: ≥ 2.5 mg/mL (7.90 mM); Clear solution

### BIOLOGICAL ACTIVITY

#### Description

(Rac)-LM11A-31 dihydrochloride is an isomer of LM11A-31 dihydrochloride. LM11A-31 dihydrochloride, a non-peptide p75<sup>NTR</sup> (neurotrophin receptor p75) modulator, is an orally active and potent proNGF (nerve growth factor) antagonist<sup>[1]</sup>.

---

## REFERENCES

---

[1]. Elshaer SL, et al. Modulation of the p75 neurotrophin receptor using LM11A-31 prevents diabetes-induced retinalvascular permeability in mice via inhibition of inflammation and the RhoA kinase pathway. *Diabetologia*. 2019 Aug;62(8):1488-1500.

---

**Caution: Product has not been fully validated for medical applications. For research use only.**

Tel: 609-228-6898

Fax: 609-228-5909

E-mail: [tech@MedChemExpress.com](mailto:tech@MedChemExpress.com)

Address: 1 Deer Park Dr, Suite Q, Monmouth Junction, NJ 08852, USA