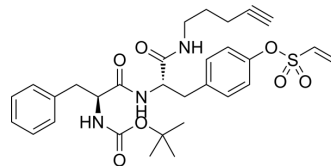


## PDI-IN-1

|                    |   |
|--------------------|---|
| Cat. No.:          | HY-110172   |
| CAS No.:           | 1461648-55-4  |
| Molecular Formula: | C <sub>30</sub> H <sub>37</sub> N <sub>3</sub> O <sub>7</sub> S                           |
| Molecular Weight:  | 583.7   |
| Target:            | PDI   |
| Pathway:           | Cell Cycle/DNA Damage; Metabolic Enzyme/Protease  |
| Storage:           | Please store the product under the recommended conditions in the Certificate of Analysis. |



## BIOLOGICAL ACTIVITY

|                           |   |
|---------------------------|---|
| Description               | PDI-IN-1 (Compound P1) is a cell-permeable human protein disulfide isomerase (PDI) inhibitor with an IC <sub>50</sub> of 1.7 μM. PDI-IN-1 has anti-cancer activity. |
| IC <sub>50</sub> & Target | IC <sub>50</sub> : 1.7 μM (PDI) <sup>[1]</sup> .  |

## REFERENCES

[1]. Ge J, Zhang C J, et al. Small molecule probe suitable for in situ profiling and inhibition of protein disulfide isomerase[J]. ACS chemical biology, 2013, 8(11): 2577-2585.

**Caution: Product has not been fully validated for medical applications. For research use only.**

Tel: 609-228-6898

Fax: 609-228-5909

E-mail: tech@MedChemExpress.com

Address: 1 Deer Park Dr, Suite Q, Monmouth Junction, NJ 08852, USA