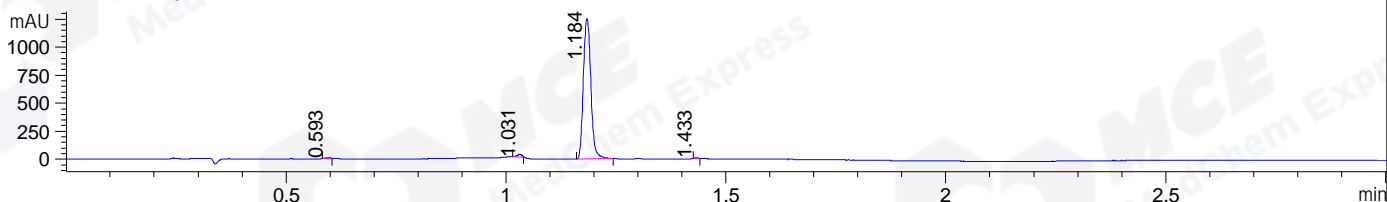
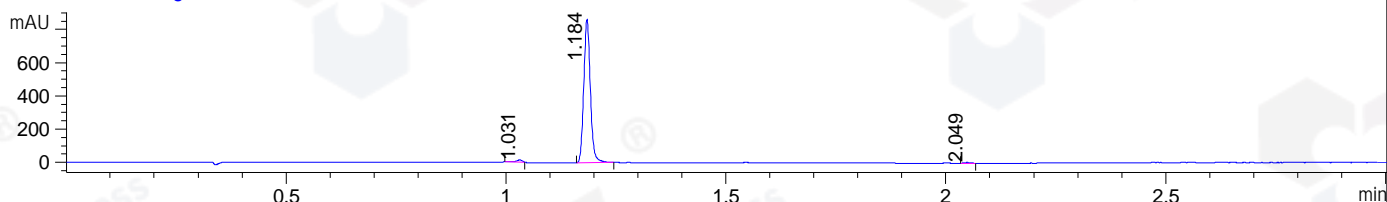


File ..ATA\2021\20210104\1225\CPK2020-D31-17053-.D Tgt Mass (CHM):  
 Injection Date : 4 Jan 21 3:37 pm +0800 Seq. Line : 30  
 Sample Name : CPK2020-D31-17053 Location : P1-B-06  
 Acq. Operator : zyj\_1547 Inj : 1  
 Spec. Reported : MS Integration Inj Volume : 4 ul  
 Acq. Method : D:\Chem32\1\data\2021\20210104\1225\1-POS-3MIN.M  
 Analysis Method : D:\CHEM32\1\DATA\2021\20210104\1225\1-POS-3MIN.M  
 CAS NO. : 106266-06-2  
 Method Info : Mobile Phase: A: water(0.01%TFA) B:ACN(0.01%TFA)  
 Gradient: 5% to 95%B within 1.3 min  
 Flow Rate :1.8ml/min  
 Column :SunFire C18, 4.6\*50mm,3.5um A-RP-698

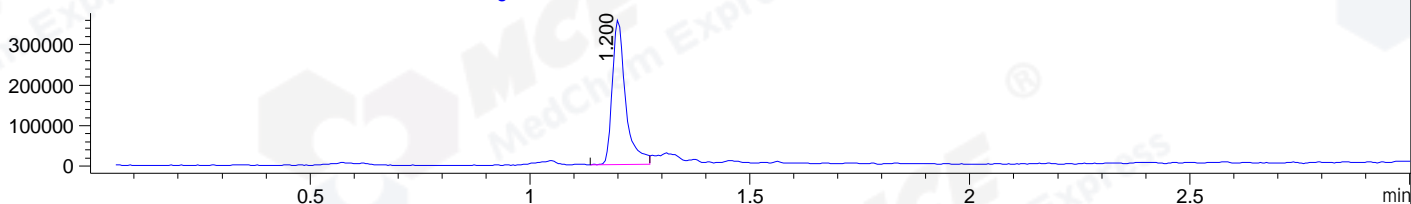
DAD1 B, Sig=214,4 Ref=off



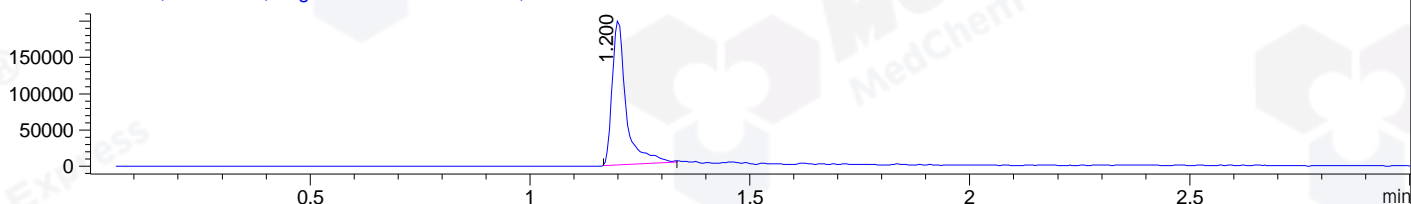
DAD1 C, Sig=254,4 Ref=off



MSD1 TIC, MS File ES-API, Pos, Scan, Frag: 70



Ion 411, MSD1 411, Target Mass 410 +H Positive, EIC=410.7:411.7



## Integration Results for DAD1 B, Sig=214,4 Ref=off

RetTim	Width	Area	Height	Area%	MS (+)
0.59	0.01	6.82	7.84	0.45	151
1.03	0.01	17.80	23.79	1.17	339
1.18	0.02	1492.22	1254.76	98.01	411
1.43	0.01	5.62	8.69	0.37	411

## Integration Results for DAD1 C, Sig=254,4 Ref=off

RetTim	Width	Area	Height	Area%	MS (+)
1.03	0.02	13.43	13.10	1.47	339
1.18	0.02	898.29	864.39	98.03	411
2.05	0.02	4.59	4.67	0.50	411

## Integration Results for MSD1 TIC, MS File

RetTim	Width	Area	Height	Area%	MS (+)
1.20	0.03	759575.75	356238.41	100.00	411

Ret. Time: 1.20

<<<< POSITIVE SPECTRA >>>>

ES-API Positive

