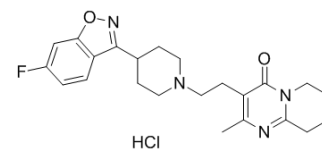


Risperidone hydrochloride

Cat. No.:	HY-11018A
CAS No.:	666179-74-4
Molecular Formula:	C ₂₃ H ₂₈ ClFN ₄ O ₂
Molecular Weight:	446.95
Target:	5-HT Receptor; Dopamine Receptor; P-glycoprotein
Pathway:	GPCR/G Protein; Neuronal Signaling; Membrane Transporter/Ion Channel
Storage:	Please store the product under the recommended conditions in the Certificate of Analysis.



BIOLOGICAL ACTIVITY

Description	Risperidone hydrochloride (R 64 766 hydrochloride) 5-HT ₂ receptor blocker, P-Glycoprotein inhibitor and potent dopamine D ₂ receptor antagonist, with K _i s of 4.8, 5.9 nM for 5-HT _{2A} and dopamine D ₂ receptor, respectively.		
IC₅₀ & Target	5-HT ₂ Receptor 4.8 nM (K _i)	dopamine D ₂ receptor 5.9 nM (K _i)	P-Glycoprotein
In Vitro	Risperidone is a serotonin 5-HT ₂ receptor blocker, P-Glycoprotein inhibitor and potent dopamine D ₂ receptor antagonist, with K _i s of 4.8, 5.9 nM for 5-HT _{2A} and dopamine D ₂ receptor, respectively. Risperidone dose-dependently inhibited the release of IL-12 in mature DCs, while the production of IL-10 is dose-dependently increased by Risperidone. A high dose of risperidone can induce TNF-α release from mature DCs ^[3] . MCE has not independently confirmed the accuracy of these methods. They are for reference only.		
In Vivo	In the first experiment, body weight is found to be slightly but significantly lower in the Risperidone-treated rats as a function of age. Similar to the first experiment, age-dependent differences in body weight are also observed between the three treatment groups in the second locomotor experiment. Rats treated with the 3.0 mg/kg dose of Risperidone weigh less than vehicle-treated rats on postnatal days 35, 38, and 41. The third locomotor experiment involves larger, mixed-sex litters in contrast to the smaller, single-sex litters used in the first two experiments. As noted for the first two experiments, rats treated with Risperidone in the third experiment gain less weight in an age-dependent manner ^[4] . MCE has not independently confirmed the accuracy of these methods. They are for reference only.		

PROTOCOL

Animal Administration ^[4]	<p>Rats^[4]</p> <p>A total of 211 Long-Evans rats (56 females and 155 males) are used. Within each study, three groups of roughly equal numbers of rats receive injections of 1.0 mg/kg of Risperidone, 3.0 mg/kg of Risperidone, or the vehicle used for the Risperidone solution as a control. In the first experiment, twenty-six male rats (n=9 in the vehicle and 3.0 mg/kg Risperidone groups; n=8 in the 1.0 mg/kg Risperidone group) are tested for locomotor activity for 20 minutes a day beginning at postnatal day 49 and continuing daily until postnatal day 53. A second experiment determined if the locomotor effects of early-life Risperidone treatment persisted well into adulthood. A third experiment ascertains the effects of sex on the locomotor effects of early-life Risperidone seen in young adult rats. In this experiment, sixty male (n=20 per treatment group) and 56 female (n=19 rats in the vehicle and 3.0 mg/kg dose group, n=18 in the 1.0 mg/kg dose group) rats are treated.</p>
---	---

A fourth experiment assessed reversal learning during adulthood in rats administered earlylife risperidone. Forty-two male rats (n=14 per treatment group) are treated^[4].
MCE has not independently confirmed the accuracy of these methods. They are for reference only.

CUSTOMER VALIDATION

- J Med Chem. 2021 Feb 23.

See more customer validations on www.MedChemExpress.com

REFERENCES

- [1]. Chen ML, et al. Risperidone modulates the cytokine and chemokine release of dendritic cells and induces TNF- α -directed cellapoptosis in neutrophils. *Int Immunopharmacol.* 2012 Jan;12(1):197-204.
- [2]. Nyberg S, et al. 5-HT2 and D2 dopamine receptor occupancy in the living human brain. A PET study with risperidone. *Psychopharmacology (Berl).* 1993;110(3):265-72.
- [3]. Bardgett ME, et al. Adult rats treated with risperidone during development are hyperactive. *Exp Clin Psychopharmacol.* 2013 Jun;21(3):259-67.
- [4]. Zhu HJ, et al. Risperidone and paliperidone inhibit p-glycoprotein activity in vitro. *Neuropsychopharmacology.* 2007 Apr;32(4):757-64.
-

Caution: Product has not been fully validated for medical applications. For research use only.

Tel: 609-228-6898

Fax: 609-228-5909

E-mail: tech@MedChemExpress.com

Address: 1 Deer Park Dr, Suite Q, Monmouth Junction, NJ 08852, USA