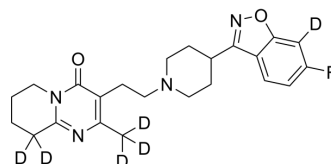


Risperidone-d₆

Cat. No.:	HY-11018S2
CAS No.:	1225444-65-4
Molecular Formula:	C ₂₃ H ₂₁ D ₆ FN ₄ O ₂
Molecular Weight:	416.52
Target:	5-HT Receptor; Dopamine Receptor; P-glycoprotein
Pathway:	GPCR/G Protein; Neuronal Signaling; Membrane Transporter/Ion Channel
Storage:	Please store the product under the recommended conditions in the Certificate of Analysis.



BIOLOGICAL ACTIVITY

Description	Risperidone-d ₆ (R 64 766-d ₆) is the deuterium labeled Risperidone (HY-11018). Risperidone is a serotonin 5-HT ₂ receptor blocker, P-Glycoprotein inhibitor and potent dopamine D ₂ receptor antagonist, with K _i s of 4.8, 5.9 nM for 5-HT _{2A} and dopamine D ₂ receptor, respectively ^{[1][2]} .	
IC₅₀ & Target	D ₂ Receptor 5.9 nM (K _i)	5-HT _{2A} Receptor 4.8 nM (K _i)

REFERENCES

- [1]. Nyberg S, et al. 5-HT₂ and D₂ dopamine receptor occupancy in the living human brain. A PET study with risperidone. *Psychopharmacology (Berl)*. 1993;110(3):265-72.
- [2]. Chen ML, et al. Risperidone modulates the cytokine and chemokine release of dendritic cells and induces TNF- α -directed cell apoptosis in neutrophils. *Int Immunopharmacol*. 2012 Jan;12(1):197-204.

Caution: Product has not been fully validated for medical applications. For research use only.

Tel: 609-228-6898

Fax: 609-228-5909

E-mail: tech@MedChemExpress.com

Address: 1 Deer Park Dr, Suite Q, Monmouth Junction, NJ 08852, USA