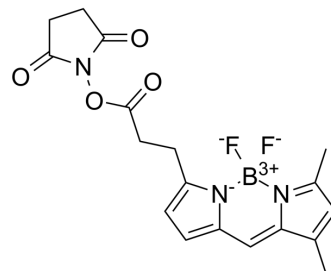


BODIPY-FL NHS ester

Cat. No.:	HY-110210
CAS No.:	146616-66-2
Molecular Formula:	C ₁₈ H ₁₈ BF ₂ N ₃ O ₄
Molecular Weight:	389.16
Target:	Fluorescent Dye
Pathway:	Others
Storage:	-20°C, protect from light * In solvent : -80°C, 6 months; -20°C, 1 month (protect from light)



SOLVENT & SOLUBILITY

In Vitro

DMSO : 125 mg/mL (321.20 mM; Need ultrasonic)

Concentration	Solvent	Mass		
		1 mg	5 mg	10 mg
Preparing Stock Solutions	1 mM	2.5696 mL	12.8482 mL	25.6964 mL
	5 mM	0.5139 mL	2.5696 mL	5.1393 mL
	10 mM	0.2570 mL	1.2848 mL	2.5696 mL

Please refer to the solubility information to select the appropriate solvent.

BIOLOGICAL ACTIVITY

Description

BODIPY-FL NHS ester (BODIPY FL, SE) is an amine-reactive fluorescent probe. The maximum excitation/emission values are 502/511 nm. BODIPY-FL NHS ester can be used to synthesize protease substrates^{[1][2]}.

REFERENCES

[1]. D'Amore C, et al. Synthesis and Biological Characterization of a New Norbormide Derived Bodipy FL-Conjugated Fluorescent Probe for Cell Imaging. *Front Pharmacol.* 2018 Sep 25;9:1055.

[2]. ones LJ, et al. Quenched BODIPY dye-labeled casein substrates for the assay of protease activity by direct fluorescence measurement. *Anal Biochem.* 1997 Sep 5;251(2):144-52.

Caution: Product has not been fully validated for medical applications. For research use only.

Tel: 609-228-6898

Fax: 609-228-5909

E-mail: tech@MedChemExpress.com

Address: 1 Deer Park Dr, Suite Q, Monmouth Junction, NJ 08852, USA