

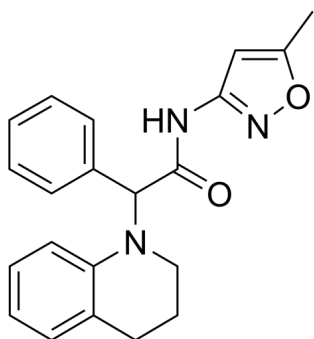
CIM0216

Cat. No.: HY-110220
Batch No.: 101502
CAS No.: 1031496-06-6
Molecular Formula: C₂₁H₂₁N₃O₂

ANALYTICAL DATA

Theoretical: C(72.60%)、H(6.09%)、N(12.10%)
Result: C(72.26%)、H(6.15%)、N(12.17%)

Chemical Structure:



Caution: Product has not been fully validated for medical applications. For research use only.

Tel: 609-228-6898

Fax: 609-228-5909

E-mail: tech@MedChemExpress.com

Address: 1 Deer Park Dr, Suite Q, Monmouth Junction, NJ 08852, USA