

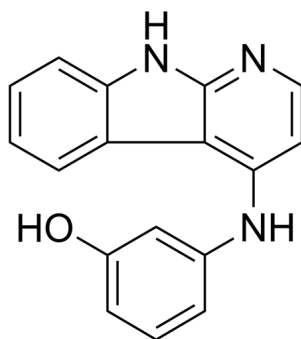
Tilfrinib

Cat. No.: HY-110244
Batch No.: 43401
CAS No.: 1600515-49-8
Molecular Formula: C₁₇H₁₃N₃O

ANALYTICAL DATA

Theoretical: C(74.17%), H(4.76%), N(15.26%)
Result: C(73.91%), H(4.51%), N(15.26%)

Chemical Structure:



Caution: Product has not been fully validated for medical applications. For research use only.

Tel: 609-228-6898

Fax: 609-228-5909

E-mail: tech@MedChemExpress.com

Address: 1 Deer Park Dr, Suite Q, Monmouth Junction, NJ 08852, USA