

## N106

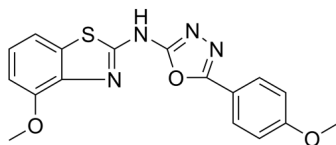
---

Cat. No.: HY-110273  
Batch No.: 160077  
CAS No.: 862974-25-2  
Molecular Formula: C<sub>17</sub>H<sub>14</sub>N<sub>4</sub>O<sub>3</sub>S

### ANALYTICAL DATA

Theoretical: C(57.62%), H(3.98%), N(15.81%)  
Result: C(57.40%), H(3.70%), N(15.70%)

Chemical Structure:



**Caution: Product has not been fully validated for medical applications. For research use only.**

Tel: 609-228-6898

Fax: 609-228-5909

E-mail: [tech@MedChemExpress.com](mailto:tech@MedChemExpress.com)

Address: 1 Deer Park Dr, Suite Q, Monmouth Junction, NJ 08852, USA