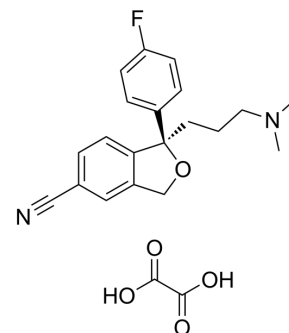


## (R)-Citalopram oxalate

Cat. No.:	HY-110289
CAS No.:	219861-53-7
Molecular Formula:	C <sub>22</sub> H <sub>23</sub> FN <sub>2</sub> O <sub>5</sub>
Molecular Weight:	414.43
Target:	Serotonin Transporter; 5-HT Receptor
Pathway:	Neuronal Signaling; GPCR/G Protein
Storage:	Please store the product under the recommended conditions in the Certificate of Analysis.



### BIOLOGICAL ACTIVITY

#### Description

(R)-Citalopram oxalate is an anticonvulsant, antidepressant and muscle relaxant. (R)-Citalopram oxalate is at least 20-fold weaker than S-citalopram (Escitalopram; HY-14258) as inhibitor of the 5-HT transporter (SERT). (R)-Citalopram oxalate functionally antagonises S-citalopram in vivo and in vitro. (R)-Citalopram oxalate has an effect on the association of Escitalopram with the high affinity primary site, and on its dissociation from the 5-HT transporter, via an allosteric mechanism<sup>[1]</sup>.

### REFERENCES

- [1]. Signe í Stórustovu, et al. R-citalopram functionally antagonises escitalopram in vivo and in vitro: evidence for kinetic interaction at the serotonin transporter. *Br J Pharmacol.* 2004 May;142(1):172-80.
- [2]. Connie Sánchez, et al. The pharmacology of citalopram enantiomers: the antagonism by R-citalopram on the effect of S-citalopram. *Basic Clin Pharmacol Toxicol.* 2006 Aug;99(2):91-5.

**Caution: Product has not been fully validated for medical applications. For research use only.**

Tel: 609-228-6898

Fax: 609-228-5909

E-mail: tech@MedChemExpress.com

Address: 1 Deer Park Dr, Suite Q, Monmouth Junction, NJ 08852, USA