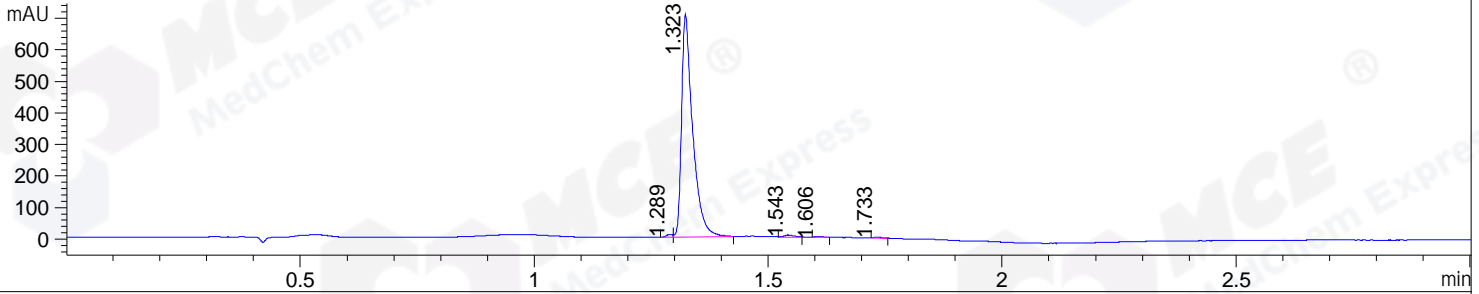
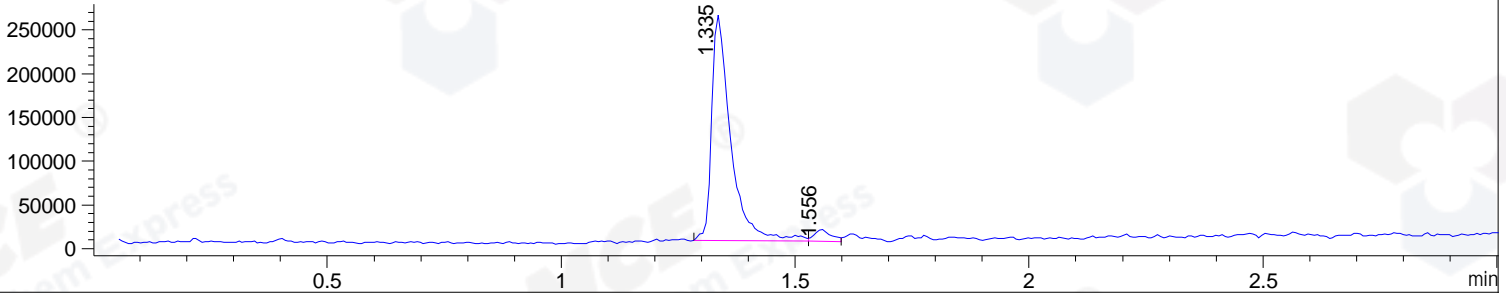


File ..1\DATA\2019\20191012\727\BIZ2019-012-WMX1.D Tgt Mass (CHM):  
 Injection Date : 12 Oct 19 7:03 pm +0800 Seq. Line : 121  
 Sample Name : BIZ2019-012-WMX1 Location : P1-C-02  
 Acq. Operator : ZJ\_1432 Inj : 1  
 Spec. Reported : MS Integration Inj Volume : 1 ul  
 Acq. Method : D:\Chem32\1\data\2019\20191012\727\1-POS-3MIN.M  
 Analysis Method : D:\CHEM32\1\DATA\2019\20191012\727\1-POS-3MIN.M  
 Catalog No : HY-11030A Batch#46902  
 Method Info : Mobile Phase: A: water(0.01%TFA) B:ACN(0.01%TFA)  
 Gradient: 5% to 95%B within 1.3 min  
 Flow Rate :1.8ml/min  
 Column :SunFire C18, 4.6\*50mm,3.5um A-RP-433  
 Oven Temperature : 45

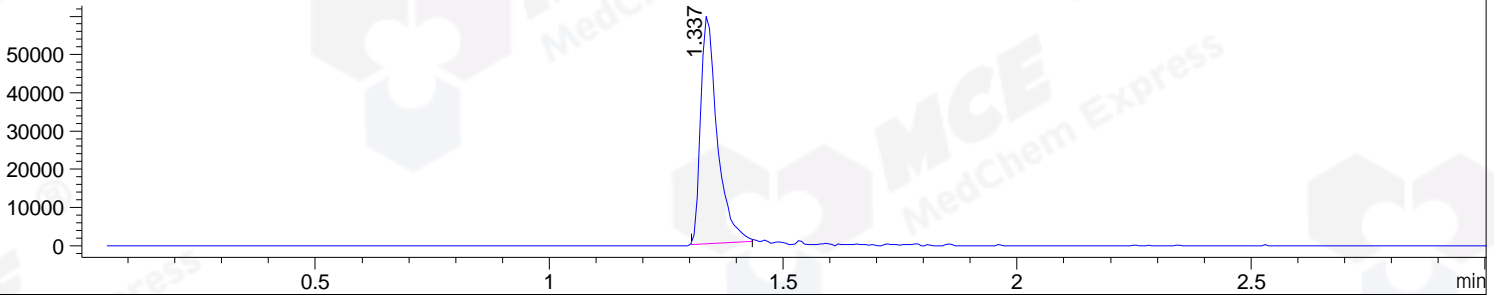
DAD1 B, Sig=214,4 Ref=off



MSD1 TIC, MS File ES-API, Pos, Scan, Frag: 70



Ion 616, MSD1 616, Target Mass 615 +H Positive, EIC=615.7:616.7



Integration Results for DAD1 B, Sig=214,4 Ref=off

RetTim	Width	Area	Height	Area%	MS (+)
1.29	0.02	8.02	8.01	0.68	130
1.32	0.03	1161.00	705.46	98.06	616
1.54	0.02	8.02	6.20	0.68	130
1.61	0.02	3.26	2.77	0.28	130
1.73	0.02	3.71	3.33	0.31	130

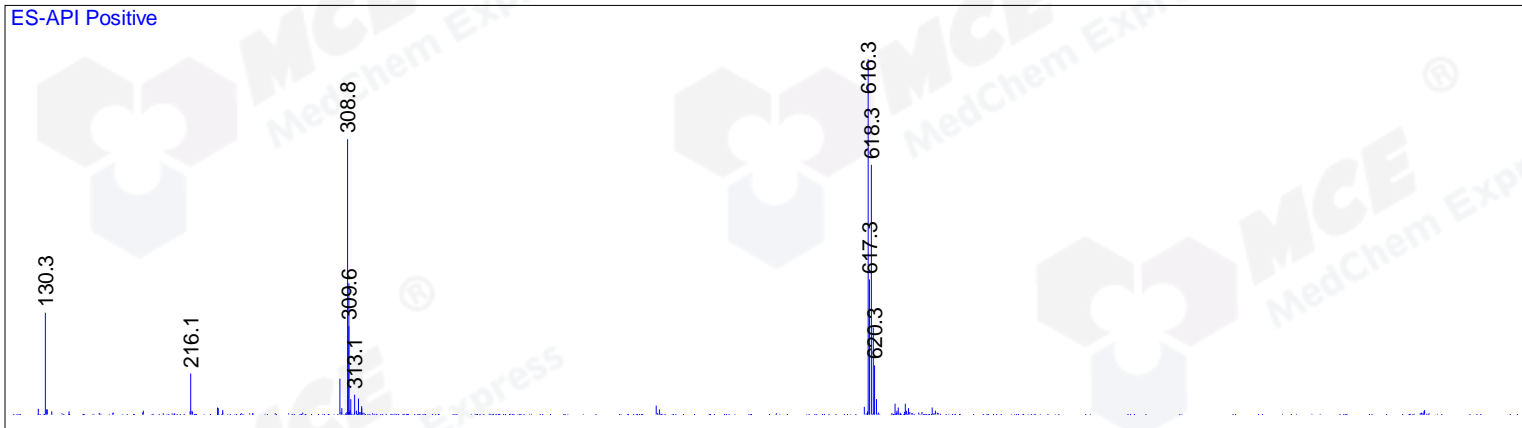
Integration Results for MSD1 TIC, MS File

RetTim	Width	Area	Height	Area%	MS (+)
1.34	0.04	732413.69	257630.20	95.69	616
1.56	0.03	32990.43	13415.42	4.31	130

Ret. Time: 1.34

<<<< POSITIVE SPECTRA >>>>

ES-API Positive



Ret. Time: 1.56

ES-API Positive

