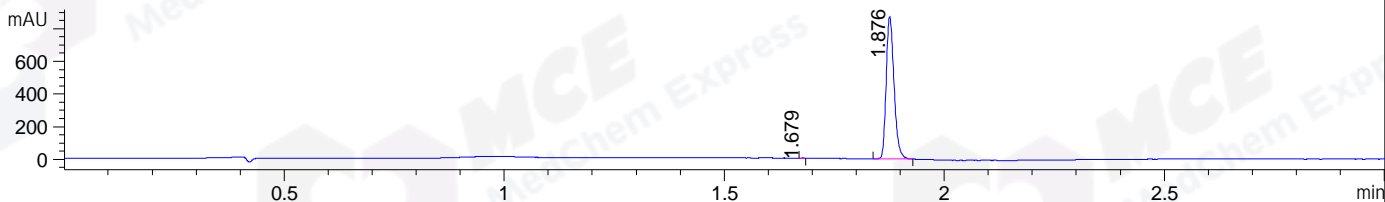
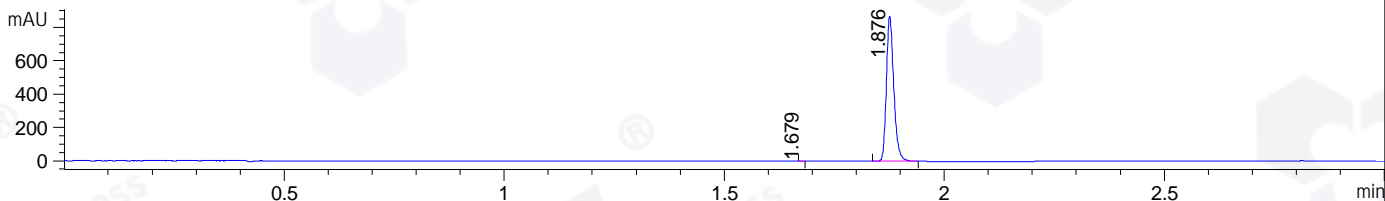


File ..1\DATA\2020\20200310\865\BIZ2020-309-CXL5.D Tgt Mass (CHM):
Injection Date : 10 Mar 20 10:55 am +0800 Seq. Line : 14
Sample Name : BIZ2020-309-CXL5 Location : P1-A-05
Acq. Operator : ZJ_1432 Inj : 1
Spec. Reported : MS Integration Inj Volume : 1 ul
Acq. Method : D:\Chem32\1\data\2020\20200310\865\1-POS-3MIN.M
Analysis Method : D:\CHEM32\1\DATA\2020\20200310\865\1-POS-3MIN.M
Catalog No : HY-110353 Batch#61304
Method Info : Mobile Phase: A: water(0.01%TFA) B:ACN(0.01%TFA)
Gradient: 5% to 95%B within 1.3 min
Flow Rate :1.8ml/min
Column :SunFire C18, 4.6*50mm,3.5um A-RP-433
Oven Temperature : 45

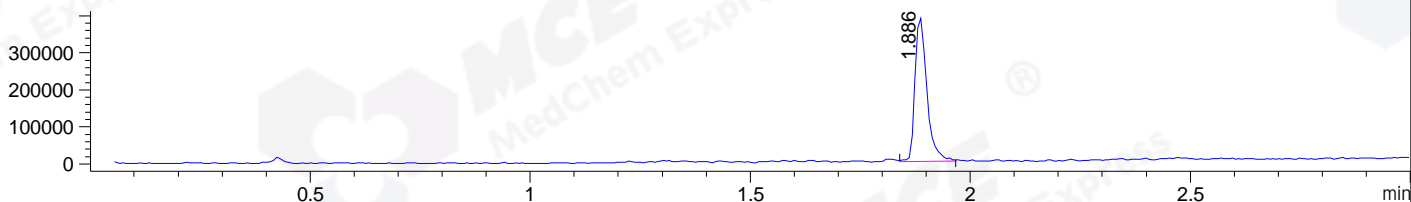
DAD1 B, Sig=214,4 Ref=off



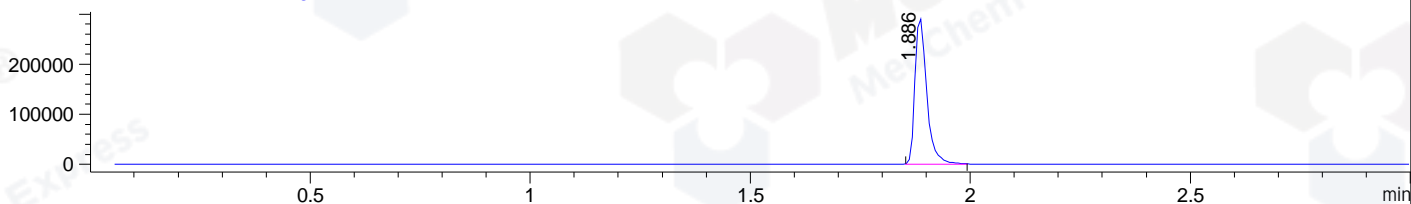
DAD1 C, Sig=254,4 Ref=off



MSD1 TIC, MS File ES-API, Pos, Scan, Frag: 70



Ion 363, MSD1 363, Target Mass 362 +H Positive, EIC=362.7:363.7



Integration Results for DAD1 B, Sig=214,4 Ref=off

RetTim	Width	Area	Height	Area%	MS (+)
1.68	0.01	0.62	2.03	0.06	ND
1.88	0.02	1084.33	872.29	99.94	363

Integration Results for DAD1 C, Sig=254,4 Ref=off

RetTim	Width	Area	Height	Area%	MS (+)
1.68	0.01	0.80	2.22	0.08	ND
1.88	0.02	1016.81	870.32	99.92	363

Integration Results for MSD1 TIC, MS File

RetTim	Width	Area	Height	Area%	MS (+)
1.89	0.03	724751.06	389495.81	100.00	363

Ret. Time: 1.89

<<<< POSITIVE SPECTRA >>>>

ES-API Positive

